



**REPORT ON
FIELD SURVEY OF THE
DEMARCATON PILLARS SAT BY
BIWTA ON BURIGANGA AND
TURAGH RIVER**

RIVER AND DELTA RESEARCH CENTRE (RDRC)

FORWARD MESSAGE

This report's purpose and scope are to review the current steps of the BIWTA project: Construction and Installation of Demarcation Pillars, Jetty with Allied Work on Evicted Foreshore Land of the Rivers Buriganga, Balu, Sitalakhya (Second phase). We studied 37 kilometers of both Buriganga and Turag riverbanks to verify the accuracy of the installed pillars. This study aims to provide insight into the operation and implementation of the demarcation and allied projects to government and non-government actors. The study highlights the current challenges in terms of accuracy, transparency, and accountability of the public spending for the conservation of Dhaka's four rivers. The hope is that the findings will help all involved actors align on a positive roadmap for strong governance and a transparent and error-free operation for the demarcation of rivers, particularly given the controversy and corruption during the last demarcation pillar installment project.

In 2014, a committee led by the joint secretary of Ministry of Land found that grabbers were filling up the rivers surrounding Dhaka. Following the recommendations of the committee, the demarcations pillars were reinstalled under a 2018 project. This research mainly focuses on identifying the wrongly installed pillars (those below or within the monsoon watermark, i.e., within the foreshore or in the river) located along the banks of the rivers Buriganga and Turag during the ongoing project.

We carried out comprehensive data collection and analysis through field surveys and digital documentation. The study includes actual field data with digital documentation of the demarcation project. We hope this will provide all relevant stakeholders with productive insights and directions for conserving our urban rivers.



Mohammad Azaz
Chairman, River and Delta Research Centre
January, 2021

Contributors

Mohammad Azaz
Dr. Tanjinul Haque Mollah
Efadul Huq
Nur Mohammad
Shamsher Ali
Farhan Tanvin
Foysal Ahmed

Published date : January, 2021

ISBN : 978-984-34-8513-9

CONTENTS

Introduction	5
Attempt to protect Dhaka's Rivers	5
New project for four rivers of Dhaka city	6
Criteria for demarcation of pillars	7
Objectives	7
Definition to consider	7
Study Area	8
Methodology	9
Limitations	10
Findings	10
i) Finding Summry	11
ii) Faulty West Pillers	15
iii) Faulty East Pillers	19
iv) Faulty Embankment Pillers	23
Observations about walkways	27
Recomendations	27
Annexure : 1- Map the 30 years Water Level	28
Annexure : 2- Table of the geographic coordinates of Buriganga River East bank pillars having water mark	30
Annexure : 3- Table of the geographic coordinates of Buriganga River West bank pillars having watermark	32
Annexure : 4- Table of the geographic coordinates of Turagh River East bank pillars having watermark	34
Annexure : 5- Table of the geographic coordinates of Turagh River West bank pillars having watermark	37
Annexure : 6- Table of the geographic coordinates of Pillars on the embankment of Buriganga	43
Annexure : 7- Table of the geographic coordinates of Pillars on the embankment of Turagh	46
References	48

ACRONYMS AND ABBREVIATIONS

ADB	Annual Development Budget
BWDB	Bangladesh Water Development Board
BIWTA	Bangladesh Inland Water Transport Authority
BIWTC	Bangladesh Inland Water Transport Corporation
BFFWC	Bangladesh Flood Forecasting & Warning Centre
CEGIS	Center for Environmental and Geographic Information Services
ECA	Ecologically Critical Area
DC	Deputy Commissioner
DoS	Department of Shipping
EIA	Environmental Impact Assessment
FY	Fiscal Year
GoB	Government of Bangladesh
GPS	Global Positioning System
HC	High Court
IWM	Institute of Water Modelling
IWT	Inland Water Transport
NGOs	Non-Governmental Organization
NLUP	National Land Use Policy
NWA	National Water Act
PD	Project Director
PWD	Public Works Datum
RAP	Rapid Action Plan
RDRC	River and Delta Research Centre

INTRODUCTION

Dhaka, the capital and largest city with a municipal area of 590 sq. miles, is home to more than one-third urban population of Bangladesh. Dhaka's total population increased by nearly 14 million, which is an annual growth rate of around 7% in the last three decades (World Population Review). Dhaka is projected to be the 6th biggest megacity in the Asia Pacific region by 2020, with an approximate population of 20 million (UN-Habitat, 2010; Mohit, 2012; World Bank, 2012). It is a distinct primate city in the national and regional hierarchy and the nucleus of Bangladesh's economy, administration, and culture. Massive urbanization and rural-urban migration cause high demand for urban land settlement and commercial use in Dhaka. Due to unplanned earth-filling of wetlands and encroachment on rivers, Dhaka continues to lose its rivers and streams in and around the city.

Geographically, Dhaka City is located at the center point of the flat deltaic plain of the three major river systems, including the Ganges, the Brahmaputra, and the Meghna. More specifically, the city is surrounded by the distributaries, Balu and Shitalakhya on the east, Turag on the west and north, and Buriganga on the south. Over centuries, these rivers have been lifelines for the city's economy and ecology. Historically, these rivers have always shown to have enormous effects on the urban economy in various ways. The town used river water for multiple purposes as the quality of water satisfied environmental quality standards. The rivers also had a cooling effect on the city. The rivers also served as sites of recreation and vacation for city dwellers.

As we know, river encroachment is an illegal intrusion in a navigable river with or without obstruction. Gradual riverbank encroachment narrows the rivers down and puts their very existence to threat. Today, encroachment has become one of the major problems faced by the rivers around Dhaka City.

ATTEMPTS TO PROTECT DHAKA'S RIVERS

In 2009, the High Court in a directive (Writ Petition no. 3503/2009 14 BLC (HC) 759) ordered the government to protect the rivers surrounding the capital city of Dhaka by demarcating the rivers as per the cadastral survey (CS) and revised survey (RS) records and retaining the eroded areas and shoals.

In 2010, in apparent compliance with the order, the Bangladesh Inland Water Transport Authority (BIWTA), in association with the Public Works Department (PWD), the Bangladesh Water Development Board (BWDB), and the district administrations concerned, put up pillars to demarcate the boundaries of the rivers. But a 2014 investigation led by the national task force for protecting the country's rivers and navigability found that the BIWTA had not put up a single demarcation pillar along the Balu and Turag rivers as the court directed. The task force found many spots where land grabbers were filling up the Buriganga and the Turag. Taskforce observers noted that many pillars were under the river water. A third of the 6,000 demarcation pillars on the Buriganga and the Turag were inside the rivers. The task force recommended that the faulty pillars would need to be reinstalled in their correct positions, and that the demarcation must follow the Joint Survey map created in 2010.

Bangladesh Inland Water Transport Authority (BIWTA), the custodian of the country's inland waterways, had the pillars installed in the wrong places over the past years, causing four major rivers around Dhaka city to lose nearly 2,500 acres to land grabbers (according to BIWTA and Daily Star report). Different individuals and institutions, both public and private, have set up housing, mills, and factories on the encroached land. The reports of misplaced pillars indicate that BIWTA did not implement the demarcation project accurately. Due to corruption among executive officials, pillars were installed inaccurately along the rivers, which ultimately helped legalize the encroachments.

In 2018, for the second time, the BIWTA undertook a 850 Cr Taka scheme for river conservation to reinstall 10,820 pillars along Dhaka's rivers. Their goal was also to discard the old ones along 220 km banks of the 110-km long four rivers around Dhaka city. The project includes dredging 1.7 cubic meter, excavating 70 lakh cubic meters, building 52 kms walkways, 19 concrete jetties, 40 kms key-wall along the river banks, three eco-parks, and 409 benches.

NEW PROJECT FOR FOUR RIVERS OF DHAKA CITY

In 2018, to fulfill the writ petition (no. 3503/2009 14 BLC (HC) 759), Bangladesh Inland Water Transport Authority (BIWTA) initiated a 850 Cr Taka project named "Construction and Installation of Demarcation Pillars, Jetty with Allied Work on Evicted Foreshore Land of the Rivers Buriganga, Balu, Sitalakhya (Second phase)." The Honorable Minister of Planning approved the plan for implementation on 02 July 2017. The main objectives of the project are to prevent unauthorized, illegal possession on the banks of the Buriganga, Turag, Shitalakhya, and Balu rivers, to enhance the beauty of the Buriganga, Turag, Shitalakhya, and the sand-free parts of the river, to improve the environment on both banks, and to build infrastructure on the banks of the river. The specific objectives are to build walkways along the rivers Buriganga, Turag, Shitalakhya, and Balu.

On 02 July, 2018, Bangladesh Inland Water Transport Authority (BIWTA) started erecting boundary pillars on the banks of the River Buriganga in order to keep the river flowing and its foreshores free of grabbers. BIWTA will also build walkways to save the rivers surrounding the capital from further pollution and encroachment. More specifically, BIWTA will set up a total of 3,803 RCC boundary pillars in the Dhaka River Port area (Sadarghat and its adjoining areas). Out of the 3,803 boundary pillars, 2,340 will be single pile type while 1,463 will be double-pile type. The total cost for erecting RCC boundary pillars will be 7,000 lakh Taka. In addition, a 1-km walkway, 1-km key wall, and 2.5-km walkways on pile will be built up from Ramchandrapur to Basila and Rayerbazar canal to Kamrangirchar during the first phase of the project ending on December 2020.

In the same project, the BIWTA will also build pillars and infrastructure along Turag, Sitalakshya, and Balu rivers. BIWTA will build 52 kilometers walkway, 12 kilometers walkway on pile of the riverbanks, 10,820 pillars, three eco-parks, two tourist-friendly parks, 19 RCC jetties, 100 RCC stairs, and 40 kilometers key wall to protect the shores of the four rivers. The second phase of the project, costing over 844 Crore Taka, will end in June 2022.

This study aims to determine the accuracy of boundary pillars installed along the Buriganga and Turag rivers during the first phase of the BIWTA project between 2018 to 2020.

CRITERIA FOR DEMARCATION OF PILLARS

In June 2009, the High Court provided directions about the demarcation of rivers with pillars in its judgment and ordered the deputy commissioners of Dhaka, Narayanganj, Gazipur and Munshiganj to demarcate the Buriganga, Shitalakkhya, Turagh, Balu and Dhaleswari rivers as per CS and RS records and retain the eroded and reformed land as part of rivers. The judgment defined foreshore in light of The Port Rules, 1966. The judgment said foreshore is the soil lying between the dry season's low-water mark (spring) and the high-water mark of monsoon during normal tides. The judgment clarified that a river primarily includes bed, foreshores, and banks. According to the judgment, foreshores must be considered as part of the river, and the pillars must be installed above the highest watermark of the subsoil during monsoon tide.

On October 15, 2020, a team of researchers from River and Delta Research Center (RDRC) visited the Turag and Buriganga rivers to identify and map the installed pillars on both sides of the rivers.

OBJECTIVES:

- To determine the accuracy of pillars installed.
- To identify the wrongly installed pillars (those installed below or within the monsoon watermark, i.e., within the foreshore or in the river) along the rivers' west side.
- To identify the wrongly installed pillars (those installed below or within the monsoon watermark, i.e., within the foreshore or in the river) along the rivers' east side.
- To identify the wrongly installed pillars along the embankment.
- To identify foreshore through mapping the highest watermark based on the last 20 years of water level measurement.

DEFINITIONS TO CONSIDER

Foreshore: According to the Port Rules, 1966, the foreshore is the soil lying between the low-water mark of the dry season (spring) and the high-water mark of monsoon during normal tides. A river primarily includes bed, foreshores, and banks.

High water mark measurement: Bangladesh Water Development Board (BWDB) and other government departments refer water levels to the Public Works Datum (PWD). PWD is a horizontal datum believed originally to be zero at a determined Mean Sea Level (MSL) at Kolkata. PWD is located approx. 1.5 ft below the MSL established in India under the British Rule and brought to Bangladesh during the Great Trigonometric Survey (Bangladesh Water Development Board (BWDB), Water level, 2020).

In the simplest method, a current meter turns with the flow of the river or stream. The current meter measures water velocity at predetermined points (subsections) along a marked line, suspended cableway, or bridge across a river or stream. The depth of the water is also measured at each point. Bangladesh Flood Forecasting & Warning Centre (BFFWC), an organization under BWDB, measures all the rivers' water levels. There are 106 stations to capture the water level data for those rivers.

According to BFWC, this season's highest water level in river Turag was 6.51 mPWD (calculation time 12:00-hour, 07/08/2020). Based on this measurement, any pillars installed below the highest mark, 6.51 mPWD level, are identified as wrongly installed or installed within the foreshore or in the river.

Accurately installed pillar: The accurate pillar installation refers to those installed above the monsoon's high-water mark during normal tides.

Faulty pillar or wrongly installed pillar: The installed pillar which touches or is installed below the line of the high-water mark of monsoon during normal tides is a faulty pillar or wrongly installed pillar.

Wetland: The 1971 Ramsar Convention on wetlands characterized wetlands as "... areas of marsh, fen, peatland, whether natural or artificial, permanent or temporary, with water that is static or flowing, fresh, brackish or salt, including areas of marine water the depth of which at low tide does not exceed six meters."

Embankment: It is a wall or bank of earth or stone built to prevent a river from flooding in areas designated by the Water Development Board.

STUDY AREA

We surveyed both the right bank (east side) and left bank (west side) along Buriganga and Turag rivers as our study area.

Keraniganj, Sakta, Bosila, Zinjira, Subhadya, Kalindi are located at the left bank (west side) of the Buriganga river. Mohammadpur, Lalbagh, Hazaribagh, Babu Bazar, Sadarghat, Postogola, Kadamtali, Kutubpur are located at the right bank (east side) of the Buriganga river.

We surveyed about 16.10 km along the Buriganga river. The Geographical Coordinates of Buriganga river is:

Latitude: 23°44'38.40"N to 23°39'36.06"N;

Longitude: 90°20'47.55"E to, 90°27'23.18"E.

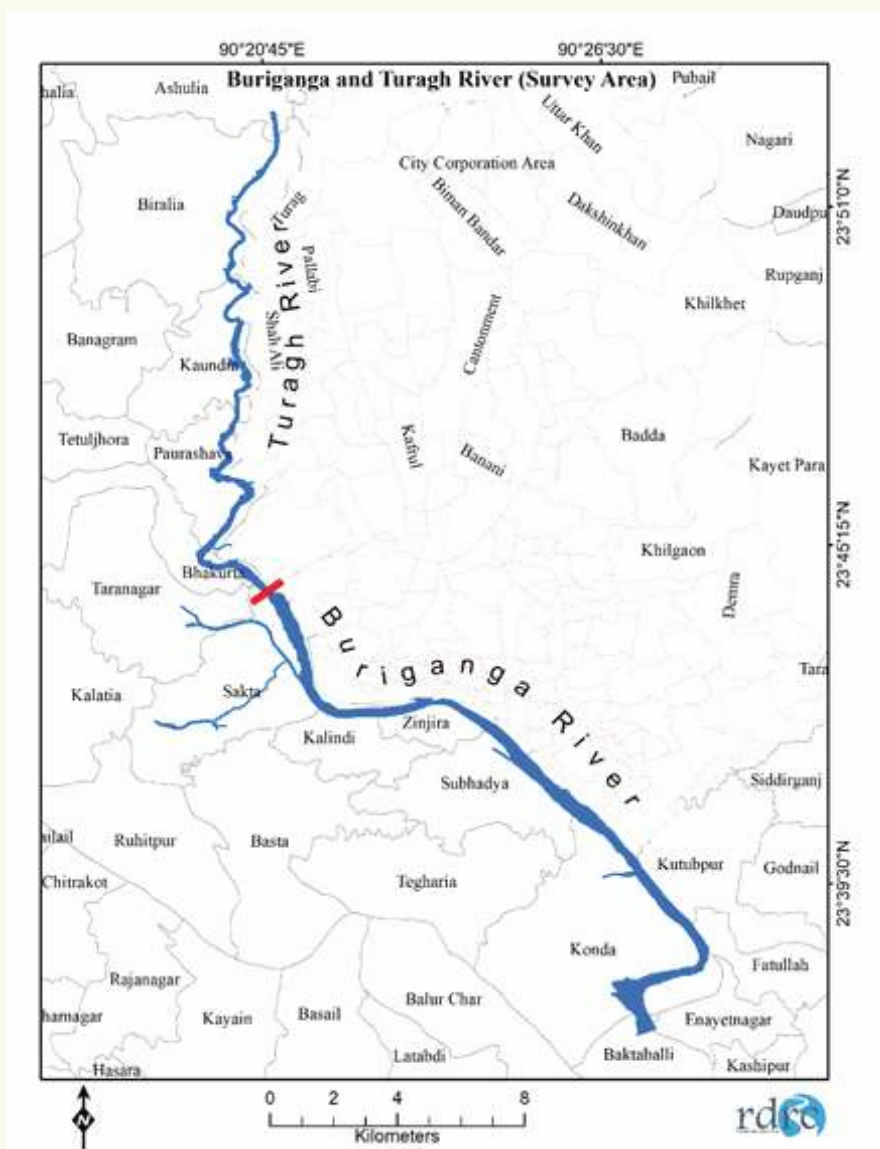
Along Turag river, we surveyed from Bosila bridge to Ashulia Landing station on the left bank (west side). We surveyed the right bank (east side) from the Ashulia landing station to the Gabtoli landing station. Along Turag's left bank, there is Shamlasi, Aminbazar, Kaundia, Birulia, Deuni, Binodpur, Ashulia areas. Dhour, Uttara, Mirpur, Pallabi, Lalkuthi are situated on the left bank (east side) of the Turag river.

We surveyed about 21.70 km of the Turag river. The Geographical Coordinates of the Turag river surveyed area is:

Latitude: 23°53'33.13"N to 23°44'34.02"N;

Longitude: 90°21'36.11"E to 90°20'42.39"E.

BIWTA installed almost 3087 pillars. We took the GPS location of 1,915 pillars and found that the BIWTA placed all the pillars inaccurately. We also observed that the demarcation pillars were installed on the embankments. For Buriganga, the embankment is almost 12 km long. For Turag, the embankment is 4 km along the left bank.



Map: Map of the study area

METHODOLOGY:

Global Positioning System (GPS) based survey is a vital part of this report's field surveys. For accurate mapping and modeling, GPS is used worldwide. We used GPS-based surveys to locate the positioning of the boundary pillars on both sides of the Turag and Buriganga rivers. The series of GPS points collected on 15 October 2020 were overlapped on satellite images to map the demarcation pillars. We cross-matched the data on Google Earth Pro using both map interpretation techniques and field surveys.

We classify the demarcation pillars set by BIWTA in the following three ways:

- A. West pillars: pillars on the areas where rivers are connected with wetlands, specifically on the west side of the rivers.
- B. East pillars: pillars on the east side of the rivers.

C. Embankment pillars: pillars on the embankment areas of the rivers.

We used the following methods for identifying and mapping each category of pillars:

A. West pillars: field data, spot photographs, digital documentation, and map interpretation techniques.

B. East pillars: GPS survey and Google Earth satellite image cross-matching.

C. Embankment pillars: GPS survey and spot photographs.

For each category of pillars, we verified if the installed pillars touch or lie below the high-water mark of normal monsoon tide as per the Port Rules 1966. If the pillars touched or were placed below the high-water mark, we considered that pillar to be a faulty or wrongly installed pillar.

LIMITATIONS

1. The CS map as well as the 2010 Joint Survey map, which was led by District Commissioner in association with ten organizations, are not available and accessible in the public domain. The court order had directed that those maps would have to be used in order to demarcate the rivers. Given the unavailability of these maps, our analysis is based on fieldwork where we documented the location of each pillar digitally by photographs and GPS coordinates.

2. In the absence of the 2010 Joint Survey map, we followed the thumb rule, i.e., the monsoon tide's highest watermark, to demarcate the foreshore. Here, we followed the foreshore identification as per the Port Rules 1966, which said foreshore is the soil lying between the dry season's low-water mark (spring) and the high-water mark of monsoon during normal tides.

FINDINGS

In the project, Construction and Installation of Demarcation Pillars, Jetty with Allied Work on Evicted Foreshore Land of the Rivers Buriganga, Balu, Sitalakhya (Second phase), BIWTA is supposed to install pillars above the foreshore of the rivers based on the Port Rules 1966. BIWTA is installing 10,820 demarcation pillars on the bank of four rivers. Our study area (Dhaka port area) contains 32 mouja namely, Nobaberchor, Chorkamrangirchor, Katashur 1 & 2, Ramchandrapur, Mirpur, Horirampur, Jahurabad, Sotodiabari, Bisil, Nobaberbagh, Moddherchor 1 & 2, Brahmonkirta, Borisur, Sreekondo, Chorwashpur, Mandile, Chorrogunathpur, Mandile, Chorrogunathpur, Zinzira, Borobordeshi, Grambatulia, Daul, Borokakor, Shamlapur, Asutia, Uttarkawnia, Daul, Isakabad, Rustampur, Birulia, Gorachatbari.

In Dhaka port area, 3,087 pillars have been newly constructed. We surveyed the existing and newly built pillars on both sides of the Buriganga and Turag rivers. The rivers' connection to the wetlands, embankments, and urban areas defined the way we classified the pillars into three categories.

West pillars: these are pillars in areas where the rivers are connected with wetlands, specifically on the west side of the rivers. Most of these areas fall in western Dhaka, namely in the four beels or wetlands (Gabtoli beel, Kaundia beel, Birulia beel, and Ashulia beel) on the floodplains of the Turag river. In these locations, there is no hydrological border between the river Turag and beels/wetlands. In light of the Port Rule 1966 and the Bangladesh Water Act 2013, section 20(1), the wetlands and rivers ought to be conserved together. Otherwise, there is a high possibility of losing all flood flow zones. In fact, flood flow zones and catchment areas of the

Turag river are already experiencing illegal earth filling by individuals, housing companies, and factories. The wrong demarcation of Turag in these areas can result in the acceleration of illegal encroachment and legalize the earth-filling of the beels and flood flow zones. Existing private ownership of land in the flood flow zones compounds the problem of encroachment of seasonal or permanent wetlands. If the wetlands and flood flow zones are separated from the rivers through demarcation pillars in these locations, private landowners will start earth-filling and encroaching on the wetlands, which is illegal (according to the Bangladesh Water Act 2013).

The riverbed can be demarcated using the CS map. But demarcation of river needs demarcation of riverbed and foreshore. If BIWTA only considers the CS map and puts up pillars in the riverbed, the demarcation pillars will have separated the rivers from the catchment areas. Rivers, canals, wetlands, floodplains, and stormwater all create a "water flow" system and should be treated in a special way. The high court has already declared river Turag as an ecologically critical area. The "water flow" system should direct any infrastructural intervention or large-scale construction as well as all hard and soft engineering and urban plans.

East pillars: these are pillars on the east side of the rivers, specifically on the urbanized side of the rivers. In these cases, the location of the pillars was assessed based on the highest level of water of the season. According to BFWC, the highest level of water of this season in river Turag was 6.51 mPWD (calculation time: 12:00-hour, date 07/08/2020). Pillars installed inaccurately below the high-water mark in such cases open up the foreshore for encroachment.

Embankment pillars: these are pillars installed beyond the embankment, on top of the embankment, or below the embankment along Buriganga and Turag. These pillars exhibit irregularities of marking foreshore along the embankments constructed by BWDB. The foreshore identification from these embankments is straightforward since the highest water level has left remarkable marks on the embankments. The highest watermark cannot exceed beyond the embankment or go over the embankment. Similarly, installing pillars on the embankment as well as below or under the embankment line raise questions because the average top slope of the embankments is the same height.

FINDING SUMMARY

Along Buriganga, BIWTA has inaccurately installed 312 pillars on both banks—228 faulty west pillars and 84 faulty east pillars. These demarcation pillars were installed below the high-water mark or in the foreshore line. The geographic coordinates of these faulty west and east pillars are provided in the table. (see annexure-2 annexure-3)

Along Turag, BIWTA has inaccurately installed 1,111 pillars on both banks—702 faulty west pillars and 409 faulty east pillars. The geographic coordinates of these faulty west and east pillars are provided in the table. (see annexure-4 annexure-5)

In total, based on our field survey, BIWTA installed 1,423 faulty demarcation pillars on both sides of the rivers Buriganga and Turag. BIWTA did not identify the foreshore appropriately as described in the Port Rule 1966.

In addition, we found irregularities among the pillars installed on, below, and in some places beyond the embankments. On both sides of the Buriganga river, we found 390 pillars above the embankments. These pillars were installed far from the river and on the BWDB embankments. Along Turag, 44 pillars were installed above the embankment, 30 pillars below the embankment, and 28 pillars beside the riverbed.

As the average height and slope of the embankment are similar in all locations, the foreshore mark must be similar along these embankments. The wide variance in the placement of the demarcations pillars on both sides of the embankments show that the foreshore map was not appropriately followed. We considered the 492 embankment pillars as faulty pillars heving contradiction as well. The geographic coordinates of these faulty embankment pillars are listed in the table. (see annexure-6 annexure-7)

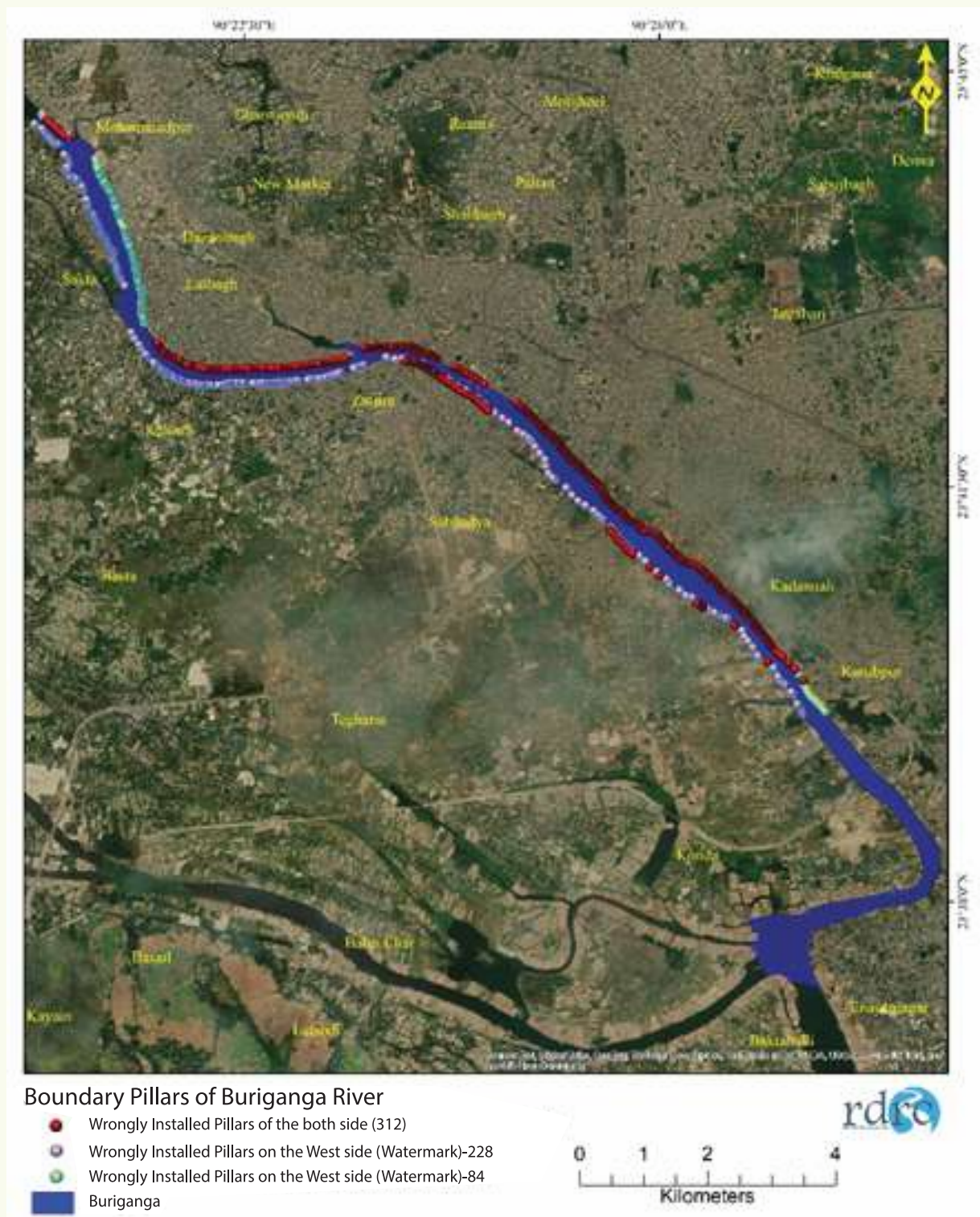
Below we provide overall spatial visualization for all faulty pillars along the Buriganga and Turag rivers.



Photo: Faulty Pillars along Buriganga, East and West



Buriganga River:



Map : Faulty Pillars along Buriganga, East and West

Turag River:



Wrongly Installed Pillars of Turag River

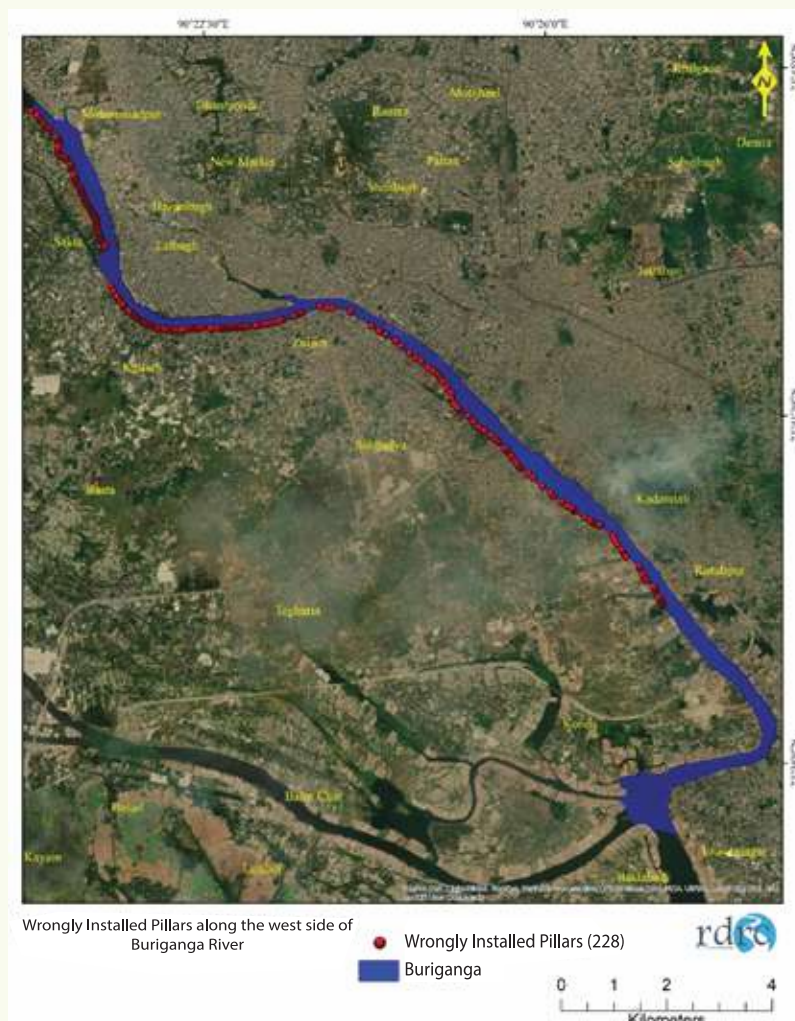
- Wrongly Installed Pillars on the West side (Watermark)-702
- Wrongly Installed Pillars on the East side (Watermark)-409
- Wrongly Installed Pillars on the East side (Above the Embankment)-44
- Turag

Map: Faulty Pillars along Turag River, East and West

FAULTY WEST PILLARS

Both rivers, Buriganga and Turag, have wetlands on their west side. Turag's wetlands include Gabtoli beel, Kaundia beel, Birulia beel, Ashulia beel, and Tongi beel. Buriganga also has some wetlands on the northern-west side. The maps below provide visualization of the faulty pillars on the west side where the rivers are connected to the wetlands.

Buriganga River:



Map : Faulty Pillars on the west side of Buriganga river

We found 228 faulty pillars on the west side of the Buriganga. All of these faulty pillars have a watermark, and some pillars are submerged in water. Some pillars were installed in the brickfield areas and different housing society areas.

The geographic coordinates of the faulty west pillars of Buriganga river are listed in the table. (see annexure-3)



Photo : Faulty west pillar in Buriganga river. Pillar Location: latitude 23°43'18.28"N, longitude 90°21'26.00"E

Turag River:

Much of the area to the west side of the Turag comprises of wetlands, namely Gabtoli beel, Kaundia beel, Birulia beel, and Ashulia beel. We found 702 faulty pillars on the west side of the Turag river from Basila bridge to the Ashulia landing station. Most of these pillars were submerged in the river or show watermark. Both new and old demarcation pillars were found in these locations. BIWTA did not follow the foreshore mark when installing demarcation pillars. The map below shows the locations of faulty west pillars along Turag river. The geographic coordinates of all faulty west pillars are listed in the table. (see annexure-5)





Wrongly installed pillars along the west side of Turag River

- Wrongly Installed Pillars (702)
- Turag River



Map : Faulty pillars on the west side of Turag river



Photo : Faulty west & east pillar in Turag river.



FAULTY EAST PILLARS

These faulty pillars are located on the east side of both rivers. The east side of the Buriganga and Turag is comparatively high lands. During the survey we found that many pillars have been installed so close to the rivers that they have watermarks, and some of them are in the river.

Buriganga River:



Map : Faulty pillars on the east side of Buriganga river

We found 84 pillars installed within the foreshore areas of the Buriganga river. Some of these pillars were installed on agricultural settlement areas and crop fields. Many of the pillars were installed along the old pillars, which were identified as faulty pillars in a previous investigation. The geographic coordinates of the faulty east pillars of Buriganga are listed in the table (see annexure2).



Photo : Faulty pillars on the east & west side of Buriganga river.



Turag River:



Map : Faulty pillars on the east side of Turag river

We found 409 faulty pillars on the east side of Turag river. Alongside the newly constructed faulty pillars, we also found the old faulty pillars in these locations. We used the season's highest water mark as the criterion to determine the accuracy of the pillars. The geographic coordinates of all faulty east pillars are listed in the table. (see annexure-4)



Photo : Faulty pillars on the east & west side of Buriganga river.



FAULTY EMBANKMENT PILLARS

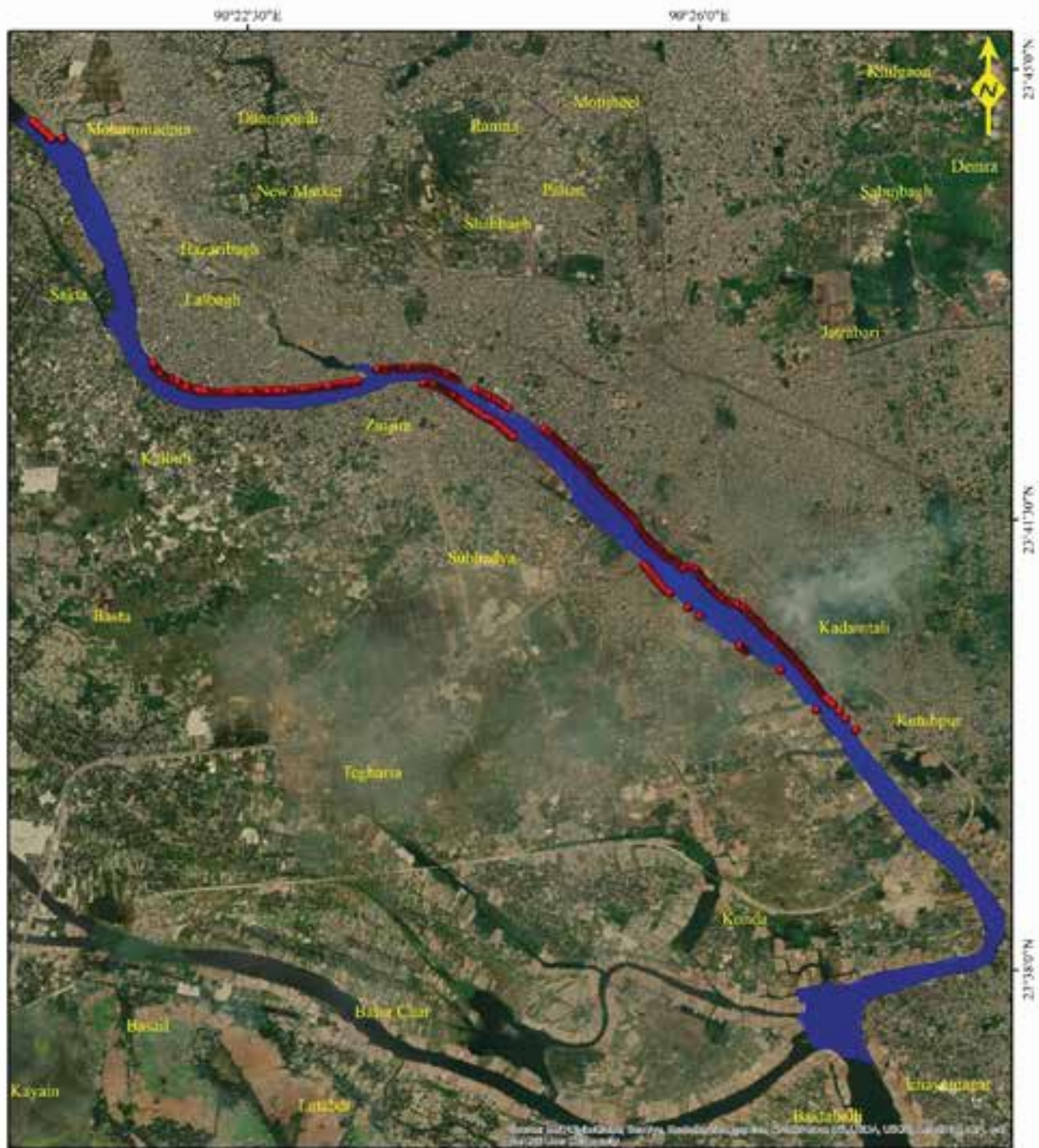
Embankment refers to a wall or bank of earth or stone built to prevent a river from flooding an area. Generally, embankments are built at the bank of the river. The Turag river has an embankment on its east side, and Buriganga has embankment on both sides.

In these locations, the embankments are considered as the current banks of the rivers Buriganga and Turag. The average ground height of the embankments is similar in all mapped locations. Identifying foreshore from the embankments is straightforward as the foreshore is clearly visible from the embankments. Any pillars installed beyond the embankment or below the embankment shows irregularities in marking the foreshore. The highest watermark cannot exceed beyond the embankment or over the embankment.

Buriganga River:

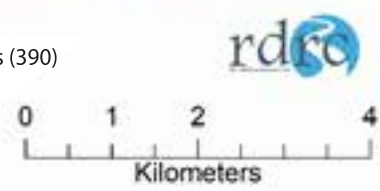
On both sides of the Buriganga river, we found 390 pillars on the embankment. In the 12 km-long embankment of Buriganga on the east side, we found pillars above the embankment near Keraniganj. Sometimes on both banks of the Buriganga, the pillars were installed on, below and beyond the BWDB embankment. The geographic coordinates of all these faulty embankment pillars are listed in the table. (see annexure-6)





Wrongly installed pillars on the Embankment of Buriganga River

- Wrongly Installed Pillars (390)
- Buriganga



Map : Faulty embankment pillars of the Buriganga river

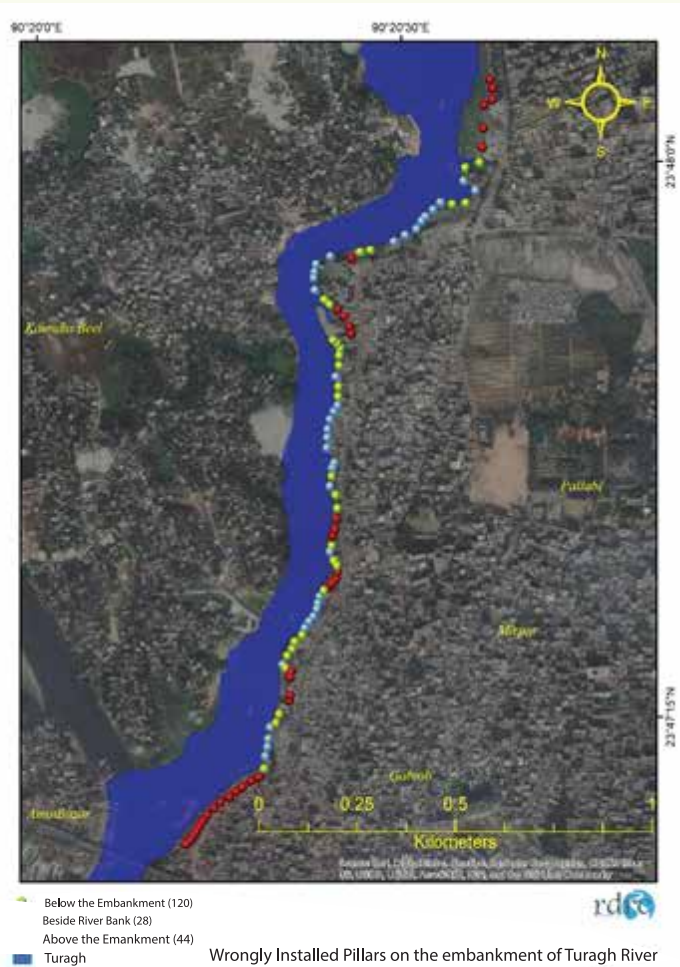
Turag River:

We found 102 pillars with irregularities on the embankment of the Turag river. BIWTA installed 44 pillars above the embankment, 30 pillars below the embankment, and 28 pillars beside the riverbed. We also found pillars installed beyond the embankment.

The average ground height and slope of the embankment are similar along the Turag. The installed pillars on embankments in areas such as Palpara, Borobazar, Kaundia, Gabtoli, Bochila, and Shinnirtek are above the historic highest watermark of 1988. But in other locations the installed pillars are 20 to 30 feet or more below the embankment. Particularly, all the pillars from Chotbari sluiceway area to Ashulia were installed 500 feet to 300 feet away from the embankment and very close to the riverbed. The discrepancy between these divergent positioning of the pillars raises question about the BIWTA's identification of the foreshore.

The geographic coordinates of all faulty embankment pillars are listed in the table. (see annexure-7)





Map : Faulty embankment pillars of Turag river



OBSERVATIONS ABOUT WALKWAYS

The proposed river demarcation project states that walkways will not hamper water flow. However, the previously built-up walkways have practically legalized encroachment on flood flow zones. For example, all the walkways from Gabtoli to Bochila and onward have been built along the river channel. These areas comprise of flood flow zones, where many entities have illegally grabbed and earth-filled the flood flow areas. After the earth filling, only a river channel was left for the water to flow. The walkways were built on illegally encroached land. As a result, the walkways have legalized illegal wetland grabbing and the natural catchment areas of rivers have decreased.

RECOMMENDATIONS:

BIWTA's recent steps to protect rivers against encroachment are very worthy of appreciation. However, the demarcation pillars that BIWTA has installed are faulty. Most of the demarcation pillars do not mark the foreshore accurately. If foreshore and catchment areas are not appropriately demarcated, there is a significant risk of losing the four urban rivers to encroachment.

- BIWTA needs to consult and work with all relevant stakeholders across government and civil society sectors, such as the Joint Survey committee led by the District Commissioner and ten associated organizations
- BIWTA needs to acquire and make publicly accessible the CS map, the 2010 Joint Survey map, the RS map, and all other government-owned datasets and maps related to urban rivers.
- BIWTA needs to establish transparent processes to ensure accountability of public spending for river conservation projects.
- BIWTA needs to build walkways along the embankments of the rivers, and not along the current channels.
- GOB should incentivize productive and seasonal use of wetlands (such as, agriculture, fishing etc.) that maintain the flood flow zones through existing livelihood practices of wetland dwellers and owners.
- GOB should conserve the catchment areas of Turag (1063.98 sq km) and Buriganga (193.15 sq km) through disallowing all real estate development in these areas. The same should be applied to Balu's catchment areas.
- GOB should promote the rivers as an alternative transportation mode.

Annexure : 1- Map the 30 years Water Level

Map the 30 years Water Level

Bangladesh Water Development Board (BWDB) and other government departments refer to water levels to the Public Works Datum (PWD). PWD is a horizontal datum believed originally to have zero at a determined Mean Sea Level (MSL) at Calcutta. PWD is located approx. 1.5 ft below the MSL established in India under the British Rule and brought to Bangladesh during the Great Trigonometric Survey (Bangladesh Water Development Board (BWDB), Water level, 2020).

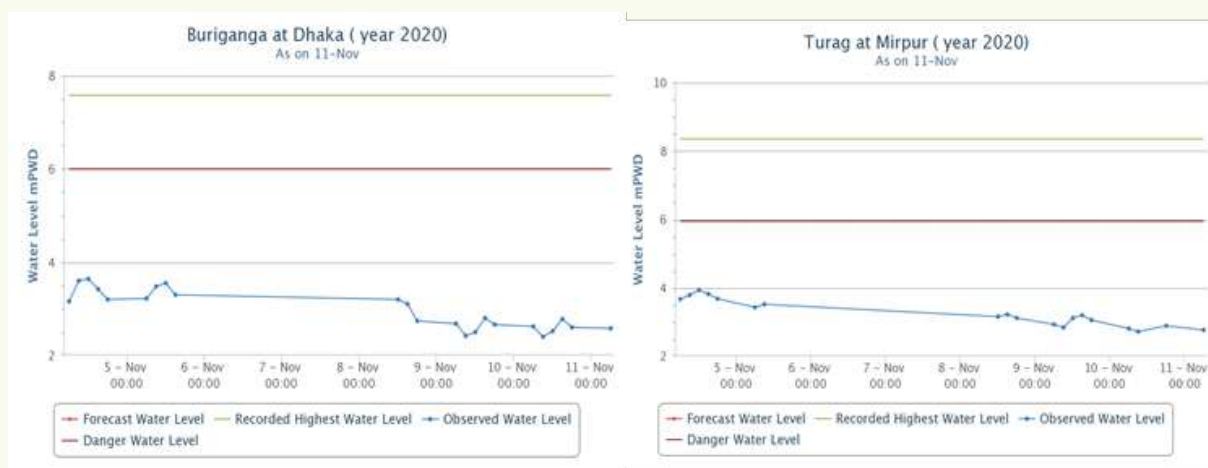
In the simplest method, a current meter turns with the flow of the river or stream. The current meter measures water velocity at predetermined points (subsections) along a marked line, suspended cableway, or bridge across a river or stream. The depth of the water is also measured at each point.

Bangladesh Flood Forecasting & Warning Centre (BFFWC), an organization under BWDB, measures all the rivers' water levels. There are 106 stations to capture the water level data for those rivers.

On the surveying day, the water level of Turag was 4.64 mPWD, and Buriganga was 4.12 mPWD.

This is to be mentioned that during the date 15/10/2020, the water level was 4.64 mPWD. Calculation time: 16:05 hour. And the highest level of water of this season in river Turag was 6.51 mPWD, Calculation time: 12:00-hour, date 07/08/2020, According to BFWC. From this measurement, in the pillars situated on the east side or right bank of the rivers, the pillars installed below this highest mark, 6.51 mPWD level, are identified as wrongly installed or installed within the foreshore or in the river.

Chart-1 is showing the water level of both rivers from 5/11/2020 to 11/11/2020.



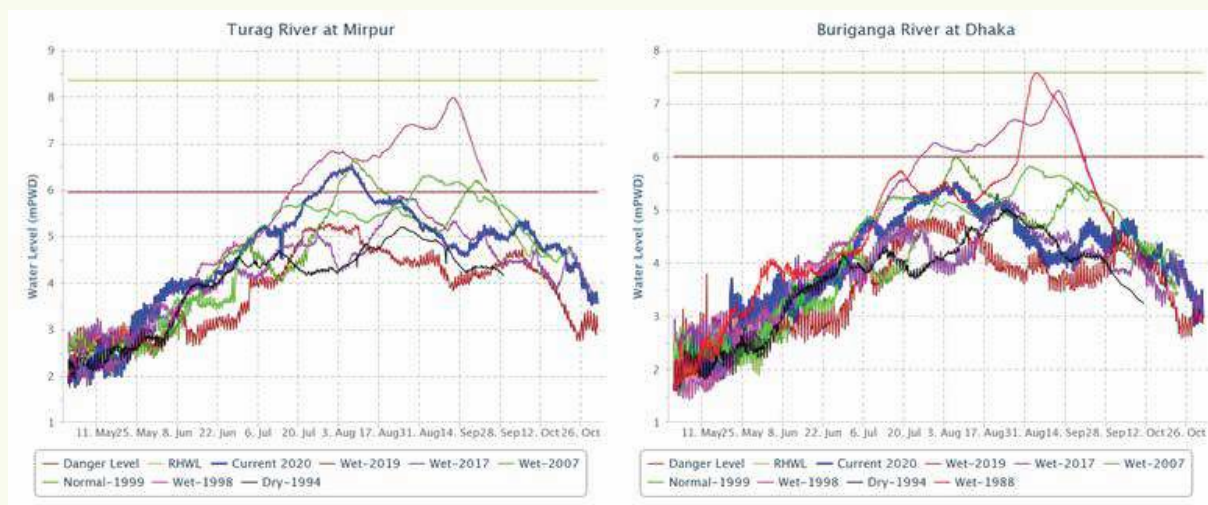
Source: Bangladesh Flood Forecasting & Warning Centre (BFFWC)

Table: Comparison of Water Level (in mPWD) of 2020 and Historical Events of 2018, 2017, 1998 & 1988

River	Station	Previously Recorded Maximum	Danger Level	Peak of the year				
				2020	2019	2017	1998	1988
Buriganga	Dhaka	7.58	6.00	3.82	4.64	5.22	7.24	7.58
Turagh	Mirpur	8.35	5.94	4.44	5.05	5.88	7.97	NA

Source: Annual Flood Report 2010, BFFWC(Flood Forecasting and Warning Centre, 2014)
Annual Flood Report 2018, BFFWC (FFWC, 1988)

Chart-2 is showing the Comparison of Water Level (in mPWD) of 2020 and Historical Events of 2019, 2017, 2007, 1998 & 1988



Annexure : 2- Table of the geographic coordinates of Buriganga River east bank pillars having water mark

The geographic coordinates of the faulty east bank pillars are provided in the table

Serial	Latitude	Longitude			
1	23° 39' 35.072" N	90° 27' 11.855" E	40	23° 41' 20.711" N	90° 25' 22.156" E
2	23° 39' 36.702" N	90° 27' 11.529" E	41	23° 41' 25.699" N	90° 25' 15.461" E
3	23° 39' 38.101" N	90° 27' 10.648" E	42	23° 41' 29.598" N	90° 25' 12.394" E
4	23° 39' 38.771" N	90° 27' 10.279" E	43	23° 42' 35.694" N	90° 23' 41.536" E
5	23° 39' 39.438" N	90° 27' 9.894" E	44	23° 42' 31.716" N	90° 23' 30.102" E
6	23° 39' 40.148" N	90° 27' 9.252" E	45	23° 42' 31.198" N	90° 23' 28.874" E
7	23° 39' 44.397" N	90° 27' 7.314" E	46	23° 42' 30.661" N	90° 23' 27.362" E
8	23° 39' 45.528" N	90° 27' 6.983" E	47	23° 42' 30.344" N	90° 23' 26.401" E
9	23° 39' 46.289" N	90° 27' 6.338" E	48	23° 42' 30.103" N	90° 23' 25.663" E
10	23° 39' 50.159" N	90° 27' 2.556" E	49	23° 42' 29.902" N	90° 23' 25.044" E
11	23° 39' 51.768" N	90° 27' 0.712" E	50	23° 42' 27.828" N	90° 23' 18.492" E
12	23° 40' 5.039" N	90° 26' 48.982" E	51	23° 42' 27.558" N	90° 23' 17.606" E
13	23° 40' 6.884" N	90° 26' 47.740" E	52	23° 42' 27.230" N	90° 23' 16.598" E
14	23° 40' 7.798" N	90° 26' 46.978" E	53	23° 42' 26.327" N	90° 23' 13.913" E
15	23° 40' 8.828" N	90° 26' 46.742" E	54	23° 42' 25.834" N	90° 23' 12.095" E
16	23° 40' 17.191" N	90° 26' 41.370" E	55	23° 42' 25.430" N	90° 23' 10.594" E
17	23° 40' 23.466" N	90° 26' 33.925" E	56	23° 42' 25.232" N	90° 23' 9.809" E
18	23° 40' 23.743" N	90° 26' 32.910" E	57	23° 42' 24.887" N	90° 23' 7.703" E
19	23° 40' 24.820" N	90° 26' 29.926" E	58	23° 42' 24.826" N	90° 23' 7.073" E
20	23° 40' 25.630" N	90° 26' 28.270" E	59	23° 42' 24.559" N	90° 23' 4.448" E
21	23° 40' 26.353" N	90° 26' 27.298" E	60	23° 42' 24.440" N	90° 23' 3.192" E
22	23° 40' 28.024" N	90° 26' 24.007" E	61	23° 42' 24.214" N	90° 23' 1.759" E
23	23° 40' 32.059" N	90° 26' 17.477" E	62	23° 42' 23.681" N	90° 22' 57.184" E
24	23° 40' 32.761" N	90° 26' 16.843" E	63	23° 42' 23.540" N	90° 22' 55.978" E
25	23° 40' 33.193" N	90° 26' 16.537" E	64	23° 42' 23.137" N	90° 22' 53.713" E
26	23° 40' 34.082" N	90° 26' 16.040" E	65	23° 42' 22.939" N	90° 22' 52.648" E
27	23° 40' 57.872" N	90° 25' 44.853" E	66	23° 42' 22.802" N	90° 22' 51.024" E
28	23° 40' 58.862" N	90° 25' 43.403" E	67	23° 42' 22.824" N	90° 22' 49.757" E
29	23° 40' 59.553" N	90° 25' 43.161" E	68	23° 42' 22.860" N	90° 22' 48.785" E
30	23° 41' 0.941" N	90° 25' 41.979" E	69	23° 42' 22.889" N	90° 22' 47.935" E
31	23° 41' 3.728" N	90° 25' 39.837" E	70	23° 42' 22.885" N	90° 22' 47.172" E
32	23° 41' 5.624" N	90° 25' 38.486" E	71	23° 42' 22.405" N	90° 22' 45.761" E
33	23° 41' 7.996" N	90° 25' 36.304" E	72	23° 42' 22.372" N	90° 22' 44.922" E
34	23° 41' 8.785" N	90° 25' 35.581" E	73	23° 42' 22.327" N	90° 22' 43.900" E
35	23° 41' 9.775" N	90° 25' 34.717" E	74	23° 42' 22.298" N	90° 22' 43.050" E
36	23° 41' 13.457" N	90° 25' 30.922" E	75	23° 42' 22.284" N	90° 22' 42.287" E
37	23° 41' 14.192" N	90° 25' 30.192" E	76	23° 42' 22.280" N	90° 22' 41.412" E
38	23° 41' 15.866" N	90° 25' 28.471" E	77	23° 42' 22.323" N	90° 22' 40.278" E
39	23° 41' 17.950" N	90° 25' 26.376" E	78	23° 42' 22.388" N	90° 22' 39.169" E
			79	23° 42' 22.439" N	90° 22' 38.158" E

80	23° 42' 22.247" N	90° 22' 35.941" E
81	23° 42' 22.415" N	90° 22' 34.020" E
82	23° 42' 22.554" N	90° 22' 29.276" E
83	23° 42' 22.529" N	90° 22' 28.477" E
84	23° 42' 22.457" N	90° 22' 26.213" E
85	23° 42' 22.482" N	90° 22' 25.320" E
86	23° 42' 22.503" N	90° 22' 23.459" E
87	23° 42' 22.421" N	90° 22' 22.714" E
88	23° 42' 22.327" N	90° 22' 21.904" E
89	23° 42' 22.230" N	90° 22' 21.158" E
90	23° 42' 22.086" N	90° 22' 20.478" E
91	23° 42' 21.949" N	90° 22' 19.787" E
92	23° 42' 21.679" N	90° 22' 18.199" E
93	23° 42' 21.474" N	90° 22' 16.568" E
94	23° 42' 21.325" N	90° 22' 12.925" E
95	23° 42' 21.390" N	90° 22' 10.977" E
96	23° 42' 21.498" N	90° 22' 9.022" E
97	23° 42' 21.610" N	90° 22' 7.906" E
98	23° 42' 21.775" N	90° 22' 6.686" E
99	23° 42' 22.074" N	90° 22' 4.810" E
100	23° 42' 22.110" N	90° 22' 2.521" E
101	23° 42' 22.686" N	90° 22' 1.120" E
102	23° 42' 23.420" N	90° 21' 58.849" E
103	23° 42' 23.633" N	90° 21' 58.240" E
104	23° 42' 23.964" N	90° 21' 57.365" E
105	23° 42' 24.259" N	90° 21' 56.361" E
106	23° 42' 24.806" N	90° 21' 54.961" E
107	23° 42' 25.343" N	90° 21' 53.963" E
108	23° 42' 25.922" N	90° 21' 53.056" E
109	23° 42' 26.938" N	90° 21' 51.469" E
110	23° 42' 27.542" N	90° 21' 50.583" E
111	23° 42' 28.090" N	90° 21' 49.730" E
112	23° 42' 28.666" N	90° 21' 48.884" E
113	23° 42' 29.177" N	90° 21' 48.193" E
114	23° 42' 29.872" N	90° 21' 47.375" E
115	23° 42' 31.135" N	90° 21' 45.986" E
116	23° 42' 32.172" N	90° 21' 44.852" E
117	23° 42' 32.863" N	90° 21' 44.078" E
118	23° 42' 35.698" N	90° 21' 41.202" E
119	23° 42' 36.432" N	90° 21' 40.536" E

120	23° 42' 37.256" N	90° 21' 39.762" E
121	23° 42' 39.942" N	90° 21' 37.613" E
122	23° 42' 41.945" N	90° 21' 36.512" E
123	23° 42' 45.010" N	90° 21' 34.315" E
124	23° 42' 48.077" N	90° 21' 32.630" E
125	23° 43' 11.935" N	90° 21' 29.239" E
126	23° 43' 14.891" N	90° 21' 27.554" E
127	23° 43' 15.978" N	90° 21' 26.449" E
128	23° 43' 16.914" N	90° 21' 26.399" E
129	23° 43' 18.278" N	90° 21' 26.003" E
130	23° 43' 19.445" N	90° 21' 25.286" E
131	23° 43' 20.914" N	90° 21' 25.139" E
132	23° 43' 22.771" N	90° 21' 24.610" E
133	23° 43' 24.164" N	90° 21' 23.648" E
134	23° 43' 25.205" N	90° 21' 23.306" E
135	23° 43' 26.929" N	90° 21' 23.818" E
136	23° 43' 28.355" N	90° 21' 23.994" E
137	23° 43' 29.428" N	90° 21' 23.648" E
138	23° 43' 29.807" N	90° 21' 22.606" E
139	23° 43' 30.787" N	90° 21' 21.909" E
140	23° 43' 31.643" N	90° 21' 21.481" E
141	23° 43' 32.464" N	90° 21' 21.092" E
142	23° 43' 33.472" N	90° 21' 20.631" E
143	23° 43' 34.415" N	90° 21' 20.174" E
144	23° 43' 35.258" N	90° 21' 19.760" E
145	23° 43' 36.079" N	90° 21' 19.350" E
146	23° 43' 36.957" N	90° 21' 18.712" E
147	23° 43' 37.820" N	90° 21' 17.862" E
148	23° 43' 38.619" N	90° 21' 17.434" E
149	23° 43' 39.411" N	90° 21' 17.016" E
150	23° 43' 40.599" N	90° 21' 16.469" E
151	23° 43' 41.600" N	90° 21' 16.077" E
152	23° 43' 42.335" N	90° 21' 15.868" E
153	23° 43' 43.217" N	90° 21' 15.519" E
154	23° 43' 43.919" N	90° 21' 15.220" E
155	23° 43' 45.093" N	90° 21' 14.494" E
156	23° 43' 46.137" N	90° 21' 13.889" E

Annexure : 3- Table of the geographic coordinates of Buriganga River
West bank pillars having watermark

The geographic coordinates of the faulty west bank pillars are provided in the table

Serial	Latitude	Longitude			
1	23° 44' 38.461" N	90° 20' 47.551" E	62	23° 43' 57.527" N	90° 21' 23.107" E
2	23° 44' 37.450" N	90° 20' 48.178" E	63	23° 43' 58.486" N	90° 21' 22.669" E
3	23° 44' 36.640" N	90° 20' 48.916" E	64	23° 43' 59.336" N	90° 21' 22.093" E
4	23° 44' 15.823" N	90° 21' 14.646" E	65	23° 43' 59.857" N	90° 21' 21.682" E
5	23° 44' 13.988" N	90° 21' 14.998" E	66	23° 44' 1.995" N	90° 21' 20.339" E
6	23° 44' 12.566" N	90° 21' 15.304" E	67	23° 44' 3.201" N	90° 21' 19.105" E
7	23° 44' 11.562" N	90° 21' 15.538" E	68	23° 44' 4.517" N	90° 21' 18.557" E
8	23° 44' 5.993" N	90° 21' 18.160" E	69	23° 44' 6.929" N	90° 21' 17.296" E
9	23° 43' 53.214" N	90° 21' 24.367" E	70	23° 44' 7.943" N	90° 21' 16.583" E
10	23° 43' 52.069" N	90° 21' 24.353" E	71	23° 44' 9.807" N	90° 21' 16.008" E
11	23° 43' 46.519" N	90° 21' 26.761" E	72	23° 44' 10.904" N	90° 21' 15.652" E
12	23° 43' 44.964" N	90° 21' 27.200" E	73	23° 44' 28.008" N	90° 21' 0.932" E
13	23° 43' 43.402" N	90° 21' 27.568" E	74	23° 39' 55.366" N	90° 27' 9.788" E
14	23° 43' 36.629" N	90° 21' 29.867" E	75	23° 39' 50.222" N	90° 27' 12.635" E
15	23° 43' 33.241" N	90° 21' 30.777" E	76	23° 39' 47.810" N	90° 27' 13.771" E
16	23° 43' 15.480" N	90° 21' 35.678" E	77	23° 39' 45.663" N	90° 27' 14.722" E
17	23° 43' 11.075" N	90° 21' 36.597" E	78	23° 39' 43.853" N	90° 27' 15.874" E
18	23° 42' 57.722" N	90° 21' 37.741" E	79	23° 39' 42.538" N	90° 27' 17.683" E
19	23° 42' 52.836" N	90° 21' 39.061" E	80	23° 39' 41.644" N	90° 27' 18.760" E
20	23° 42' 54.398" N	90° 21' 38.704" E	81	23° 39' 40.089" N	90° 27' 19.851" E
21	23° 42' 56.262" N	90° 21' 38.238" E	82	23° 39' 38.936" N	90° 27' 21.148" E
22	23° 42' 58.949" N	90° 21' 37.800" E	83	23° 39' 38.223" N	90° 27' 21.768" E
23	23° 43' 0.100" N	90° 21' 38.019" E	84	23° 39' 36.196" N	90° 27' 23.190" E
24	23° 43' 1.580" N	90° 21' 37.800" E			
25	23° 43' 2.759" N	90° 21' 37.773" E			
26	23° 43' 4.404" N	90° 21' 37.855" E			
27	23° 43' 5.747" N	90° 21' 38.238" E			
28	23° 43' 6.925" N	90° 21' 38.129" E			
29	23° 43' 8.269" N	90° 21' 37.937" E			
30	23° 43' 9.530" N	90° 21' 37.416" E			
31	23° 43' 10.352" N	90° 21' 36.978" E			
32	23° 43' 12.051" N	90° 21' 36.539" E			
33	23° 43' 13.504" N	90° 21' 36.237" E			
34	23° 43' 14.546" N	90° 21' 36.155" E			
35	23° 43' 16.794" N	90° 21' 35.771" E			
36	23° 43' 17.726" N	90° 21' 35.443" E			
37	23° 43' 18.877" N	90° 21' 35.415" E			
38	23° 43' 19.562" N	90° 21' 34.839" E			
39	23° 43' 20.850" N	90° 21' 34.373" E			
40	23° 43' 22.495" N	90° 21' 34.346" E			
41	23° 43' 23.509" N	90° 21' 34.154" E			
42	23° 43' 24.715" N	90° 21' 33.962" E			
43	23° 43' 26.113" N	90° 21' 33.579" E			
44	23° 43' 27.566" N	90° 21' 33.195" E			
45	23° 43' 29.019" N	90° 21' 32.811" E			
46	23° 43' 30.527" N	90° 21' 32.455" E			
47	23° 43' 31.157" N	90° 21' 31.934" E			
48	23° 43' 32.146" N	90° 21' 31.668" E			
49	23° 43' 34.474" N	90° 21' 30.618" E			
50	23° 43' 35.762" N	90° 21' 29.960" E			
51	23° 43' 37.489" N	90° 21' 29.494" E			
52	23° 43' 38.969" N	90° 21' 28.946" E			
53	23° 43' 40.203" N	90° 21' 29.056" E			
54	23° 43' 41.491" N	90° 21' 28.891" E			
55	23° 43' 47.412" N	90° 21' 26.671" E			
56	23° 43' 48.152" N	90° 21' 26.013" E			
57	23° 43' 49.002" N	90° 21' 25.629" E			
58	23° 43' 50.071" N	90° 21' 25.437" E			
59	23° 43' 51.277" N	90° 21' 25.191" E			
60	23° 43' 54.292" N	90° 21' 24.341" E			
61	23° 43' 55.690" N	90° 21' 23.793" E			

157	23° 43' 47.242" N	90° 21' 13.935" E
158	23° 43' 48.124" N	90° 21' 13.222" E
159	23° 43' 49.476" N	90° 21' 11.758" E
160	23° 43' 49.944" N	90° 21' 11.485" E
161	23° 43' 50.427" N	90° 21' 11.200" E
162	23° 43' 51.211" N	90° 21' 10.811" E
163	23° 43' 52.021" N	90° 21' 10.462" E
164	23° 43' 53.701" N	90° 21' 10.793" E
165	23° 43' 54.929" N	90° 21' 10.196" E
166	23° 43' 55.559" N	90° 21' 9.947" E
167	23° 43' 59.885" N	90° 21' 8.386" E
168	23° 44' 1.310" N	90° 21' 8.044" E
169	23° 44' 2.020" N	90° 21' 7.640" E
170	23° 44' 4.494" N	90° 21' 5.756" E
171	23° 44' 5.656" N	90° 21' 5.040" E
172	23° 44' 5.989" N	90° 21' 4.099" E
173	23° 44' 6.385" N	90° 21' 1.865" E
174	23° 44' 8.362" N	90° 21' 0.650" E
175	23° 44' 7.260" N	90° 21' 1.271" E
176	23° 44' 12.884" N	90° 21' 0.985" E
177	23° 44' 13.635" N	90° 21' 0.999" E
178	23° 44' 14.723" N	90° 21' 0.819" E
179	23° 44' 16.047" N	90° 21' 0.642" E
180	23° 44' 16.910" N	90° 20' 59.763" E
181	23° 44' 18.170" N	90° 20' 58.753" E
182	23° 44' 23.374" N	90° 20' 55.381" E
183	23° 44' 23.910" N	90° 20' 53.351" E
184	23° 44' 25.411" N	90° 20' 52.184" E
185	23° 44' 27.283" N	90° 20' 50.816" E
186	23° 44' 28.770" N	90° 20' 49.128" E
187	23° 44' 29.512" N	90° 20' 48.718" E
188	23° 44' 31.321" N	90° 20' 47.422" E
189	23° 44' 33.652" N	90° 20' 43.761" E
190	23° 44' 9.259" N	90° 21' 0.466" E
191	23° 44' 10.355" N	90° 21' 0.137" E
192	23° 44' 11.945" N	90° 21' 0.274" E
193	23° 41' 33.554" N	90° 25' 6.931" E

194	23° 41' 36.843" N	90° 25' 3.641" E
195	23° 41' 40.462" N	90° 25' 2.161" E
196	23° 41' 43.586" N	90° 25' 1.832" E
197	23° 41' 46.711" N	90° 24' 59.200" E
198	23° 41' 50.330" N	90° 24' 56.733" E
199	23° 41' 53.290" N	90° 24' 54.760" E
200	23° 41' 54.935" N	90° 24' 53.115" E
201	23° 41' 58.389" N	90° 24' 47.852" E
202	23° 42' 2.500" N	90° 24' 43.576" E
203	23° 42' 4.638" N	90° 24' 40.287" E
204	23° 42' 7.599" N	90° 24' 36.339" E
205	23° 42' 11.711" N	90° 24' 31.241" E
206	23° 42' 15.000" N	90° 24' 27.787" E
207	23° 42' 18.947" N	90° 24' 21.702" E
208	23° 42' 24.046" N	90° 24' 12.985" E
209	23° 42' 32.434" N	90° 23' 59.827" E
210	23° 42' 34.901" N	90° 23' 49.466" E
211	23° 42' 34.759" N	90° 23' 46.011" E
212	23° 42' 20.921" N	90° 24' 17.590" E
213	23° 41' 56.579" N	90° 24' 50.813" E
214	23° 41' 34.541" N	90° 25' 5.615" E
215	23° 40' 54.904" N	90° 25' 49.528" E
216	23° 40' 52.272" N	90° 25' 52.488" E
217	23° 40' 47.174" N	90° 25' 58.080" E
218	23° 40' 40.924" N	90° 26' 4.494" E
219	23° 40' 37.635" N	90° 26' 9.757" E
220	23° 40' 34.839" N	90° 26' 13.047" E
221	23° 40' 14.280" N	90° 26' 42.487" E
222	23° 40' 11.786" N	90° 26' 44.374" E
223	23° 39' 53.930" N	90° 26' 59.652" E
224	23° 39' 57.483" N	90° 26' 57.745" E
225	23° 39' 58.496" N	90° 26' 57.118" E
226	23° 40' 4.251" N	90° 26' 49.397" E
227	23° 40' 43.062" N	90° 26' 3.179" E
228	23° 41' 22.886" N	90° 25' 18.544" E

Annexure : 4- Table of the geographic coordinates of Turagh River
East bank pillars having watermark

The geographic coordinates of these faulty east bank pillars of Turag are provided in the table

Serial	Latitude	Longitude			
1	23° 53' 29.954" N	90° 21' 36.029" E	62	23° 51' 36.279" N	90° 20' 49.635" E
2	23° 52' 51.527" N	90° 21' 22.268" E	63	23° 51' 35.641" N	90° 20' 49.163" E
3	23° 52' 49.616" N	90° 21' 21.410" E	64	23° 51' 34.902" N	90° 20' 48.637" E
4	23° 52' 47.841" N	90° 21' 20.023" E	65	23° 51' 34.231" N	90° 20' 48.121" E
5	23° 52' 47.297" N	90° 21' 19.458" E	66	23° 51' 33.289" N	90° 20' 47.485" E
6	23° 52' 43.056" N	90° 21' 14.666" E	67	23° 51' 32.785" N	90° 20' 46.955" E
7	23° 52' 42.814" N	90° 21' 14.134" E	68	23° 51' 32.256" N	90° 20' 46.361" E
8	23° 52' 42.285" N	90° 21' 13.522" E	69	23° 51' 31.820" N	90° 20' 45.850" E
9	23° 52' 39.086" N	90° 21' 10.486" E	70	23° 51' 26.001" N	90° 20' 38.141" E
10	23° 52' 38.456" N	90° 21' 9.736" E	71	23° 51' 25.382" N	90° 20' 37.392" E
11	23° 52' 37.997" N	90° 21' 9.146" E	72	23° 51' 24.766" N	90° 20' 36.539" E
12	23° 52' 37.404" N	90° 21' 8.233" E	73	23° 51' 24.241" N	90° 20' 35.848" E
13	23° 52' 37.147" N	90° 21' 7.206" E	74	23° 51' 23.488" N	90° 20' 35.188" E
14	23° 52' 30.159" N	90° 21' 1.814" E	75	23° 51' 22.858" N	90° 20' 34.440" E
15	23° 52' 29.516" N	90° 21' 1.824" E	76	23° 51' 21.363" N	90° 20' 33.361" E
16	23° 52' 28.609" N	90° 21' 1.961" E	77	23° 51' 20.502" N	90° 20' 32.544" E
17	23° 52' 27.568" N	90° 21' 2.069" E	78	23° 51' 19.512" N	90° 20' 31.824" E
18	23° 52' 24.499" N	90° 21' 2.875" E	79	23° 51' 4.068" N	90° 20' 21.299" E
19	23° 52' 23.469" N	90° 21' 2.940" E	80	23° 51' 3.412" N	90° 20' 21.166" E
20	23° 52' 22.555" N	90° 21' 2.962" E	81	23° 51' 2.692" N	90° 20' 21.065" E
21	23° 52' 21.493" N	90° 21' 2.973" E	82	23° 51' 2.080" N	90° 20' 21.004" E
22	23° 52' 20.741" N	90° 21' 2.998" E	83	23° 51' 1.590" N	90° 20' 21.386" E
23	23° 52' 19.826" N	90° 21' 3.055" E	84	23° 51' 0.780" N	90° 20' 21.631" E
24	23° 52' 18.908" N	90° 21' 3.120" E	85	23° 50' 57.225" N	90° 20' 20.476" E
25	23° 52' 17.630" N	90° 21' 3.279" E	86	23° 50' 56.216" N	90° 20' 19.758" E
26	23° 52' 16.251" N	90° 21' 3.559" E	87	23° 50' 53.236" N	90° 20' 16.372" E
27	23° 52' 14.768" N	90° 21' 3.916" E	88	23° 50' 54.490" N	90° 20' 17.734" E
28	23° 52' 14.344" N	90° 21' 3.294" E	89	23° 50' 55.686" N	90° 20' 18.822" E
29	23° 52' 13.289" N	90° 21' 3.798" E	90	23° 50' 48.983" N	90° 20' 14.454" E
30	23° 52' 12.508" N	90° 21' 4.140" E	91	23° 50' 48.378" N	90° 20' 14.301" E
31	23° 52' 11.089" N	90° 21' 4.082" E	92	23° 50' 47.680" N	90° 20' 14.224" E
32	23° 52' 9.341" N	90° 21' 4.106" E	93	23° 50' 46.835" N	90° 20' 14.302" E
33	23° 52' 9.114" N	90° 21' 4.055" E	94	23° 50' 46.288" N	90° 20' 14.590" E
34	23° 52' 8.790" N	90° 21' 3.987" E	95	23° 50' 45.690" N	90° 20' 14.935" E
35	23° 52' 8.261" N	90° 21' 3.933" E	96	23° 50' 44.653" N	90° 20' 15.605" E
36	23° 52' 7.952" N	90° 21' 3.911" E	97	23° 50' 43.930" N	90° 20' 16.181" E
37	23° 52' 7.116" N	90° 21' 3.625" E	98	23° 50' 15.166" N	90° 20' 17.492" E
38	23° 52' 6.713" N	90° 21' 3.618" E	99	23° 50' 13.909" N	90° 20' 17.186" E
39	23° 52' 4.009" N	90° 21' 3.761" E	100	23° 50' 13.153" N	90° 20' 17.042" E
40	23° 52' 3.358" N	90° 21' 3.631" E	101	23° 50' 12.394" N	90° 20' 16.930" E
41	23° 52' 2.276" N	90° 21' 3.615" E	102	23° 50' 10.874" N	90° 20' 17.154" E
42	23° 52' 0.474" N	90° 21' 3.394" E	103	23° 49' 59.340" N	90° 20' 17.086" E
43	23° 51' 56.480" N	90° 21' 1.998" E	104	23° 49' 58.731" N	90° 20' 16.604" E
44	23° 51' 55.357" N	90° 21' 1.782" E	105	23° 49' 57.921" N	90° 20' 15.938" E
45	23° 51' 54.788" N	90° 21' 1.451" E	106	23° 49' 56.964" N	90° 20' 15.128" E
46	23° 51' 46.369" N	90° 20' 55.198" E	107	23° 49' 56.287" N	90° 20' 14.613" E
47	23° 51' 45.714" N	90° 20' 54.697" E	108	23° 49' 55.830" N	90° 20' 14.307" E
48	23° 51' 45.192" N	90° 20' 54.287" E	109	23° 49' 55.340" N	90° 20' 14.037" E
49	23° 51' 44.724" N	90° 20' 53.920" E	110	23° 49' 54.775" N	90° 20' 13.818" E
50	23° 51' 44.034" N	90° 20' 53.592" E	111	23° 49' 54.213" N	90° 20' 13.652" E
51	23° 51' 43.481" N	90° 20' 53.198" E	112	23° 49' 42.112" N	90° 20' 25.404" E
52	23° 51' 42.744" N	90° 20' 52.662" E	113	23° 49' 41.347" N	90° 20' 25.863" E
53	23° 51' 42.186" N	90° 20' 52.400" E	114	23° 49' 29.266" N	90° 20' 26.061" E
54	23° 51' 41.624" N	90° 20' 52.184" E	115	23° 49' 28.892" N	90° 20' 25.288" E
55	23° 51' 41.109" N	90° 20' 52.014" E	116	23° 49' 28.244" N	90° 20' 24.568" E
56	23° 51' 40.317" N	90° 20' 51.777" E	117	23° 49' 24.247" N	90° 20' 20.072" E
57	23° 51' 39.619" N	90° 20' 51.474" E	118	23° 49' 23.461" N	90° 20' 19.310" E
58	23° 51' 38.805" N	90° 20' 51.035" E	119	23° 49' 23.124" N	90° 20' 18.848" E
59	23° 51' 38.323" N	90° 20' 50.740" E	120	23° 49' 22.771" N	90° 20' 18.492" E
60	23° 51' 37.805" N	90° 20' 50.391" E	121	23° 49' 22.257" N	90° 20' 17.970" E
61	23° 51' 37.228" N	90° 20' 50.125" E	122	23° 49' 7.342" N	90° 20' 14.104" E
			123	23° 49' 6.730" N	90° 20' 17.570" E

124	23° 49' 7.010" N	90° 20' 20.710" E
125	23° 49' 5.891" N	90° 20' 25.454" E
126	23° 49' 5.038" N	90° 20' 25.969" E
127	23° 48' 57.876" N	90° 20' 26.116" E
128	23° 48' 56.594" N	90° 20' 25.979" E
129	23° 48' 55.991" N	90° 20' 26.049" E
130	23° 48' 55.185" N	90° 20' 25.732" E
131	23° 48' 54.476" N	90° 20' 25.351" E
132	23° 48' 47.992" N	90° 20' 23.700" E
133	23° 48' 47.333" N	90° 20' 23.404" E
134	23° 48' 46.278" N	90° 20' 23.048" E
135	23° 48' 45.432" N	90° 20' 22.828" E
136	23° 48' 43.055" N	90° 20' 22.744" E
137	23° 48' 41.759" N	90° 20' 22.528" E
138	23° 48' 41.133" N	90° 20' 22.467" E
139	23° 48' 39.894" N	90° 20' 21.905" E
140	23° 48' 38.476" N	90° 20' 22.031" E
141	23° 48' 37.453" N	90° 20' 22.171" E
142	23° 48' 36.726" N	90° 20' 22.304" E
143	23° 48' 35.000" N	90° 20' 22.443" E
144	23° 48' 34.064" N	90° 20' 22.756" E
145	23° 48' 33.063" N	90° 20' 23.116" E
146	23° 48' 31.756" N	90° 20' 22.400" E
147	23° 48' 30.838" N	90° 20' 22.835" E
148	23° 48' 29.959" N	90° 20' 22.777" E
149	23° 48' 29.254" N	90° 20' 23.216" E
150	23° 48' 28.338" N	90° 20' 23.797" E
151	23° 48' 27.737" N	90° 20' 24.236" E
152	23° 48' 27.181" N	90° 20' 24.569" E
153	23° 48' 26.756" N	90° 20' 24.824" E
154	23° 48' 24.748" N	90° 20' 24.591" E
155	23° 48' 24.151" N	90° 20' 24.954" E
156	23° 48' 20.314" N	90° 20' 29.443" E
157	23° 48' 19.165" N	90° 20' 29.694" E
158	23° 48' 18.571" N	90° 20' 30.492" E
159	23° 48' 18.047" N	90° 20' 31.197" E
160	23° 48' 17.356" N	90° 20' 31.503" E
161	23° 48' 16.219" N	90° 20' 32.011" E
162	23° 48' 15.448" N	90° 20' 32.324" E
163	23° 48' 14.988" N	90° 20' 33.245" E
164	23° 48' 14.499" N	90° 20' 33.410" E
165	23° 48' 13.887" N	90° 20' 33.598" E
166	23° 48' 13.361" N	90° 20' 33.731" E
167	23° 48' 12.744" N	90° 20' 34.277" E
168	23° 48' 12.143" N	90° 20' 34.567" E
169	23° 48' 11.789" N	90° 20' 34.987" E
170	23° 48' 11.023" N	90° 20' 35.284" E
171	23° 48' 10.285" N	90° 20' 35.654" E
172	23° 48' 9.509" N	90° 20' 35.725" E
173	23° 48' 8.768" N	90° 20' 36.071" E
174	23° 52' 36.868" N	90° 21' 2.141" E
175	23° 48' 43.877" N	90° 20' 22.916" E
176	23° 48' 44.870" N	90° 20' 22.847" E
177	23° 48' 40.587" N	90° 20' 22.333" E
178	23° 48' 48.605" N	90° 20' 24.149" E
179	23° 48' 49.565" N	90° 20' 24.321" E
180	23° 48' 51.072" N	90° 20' 24.184" E
181	23° 48' 52.169" N	90° 20' 24.698" E
182	23° 48' 53.094" N	90° 20' 25.109" E
183	23° 48' 53.608" N	90° 20' 25.349" E
184	23° 49' 6.868" N	90° 20' 22.368" E
185	23° 49' 6.868" N	90° 20' 23.738" E

186	23° 49' 6.765" N	90° 20' 19.798" E
187	23° 49' 6.594" N	90° 20' 18.736" E
188	23° 49' 6.628" N	90° 20' 16.508" E
189	23° 49' 6.902" N	90° 20' 15.549" E
190	23° 49' 7.074" N	90° 20' 14.658" E
191	23° 49' 7.896" N	90° 20' 13.219" E
192	23° 49' 8.924" N	90° 20' 12.705" E
193	23° 49' 9.849" N	90° 20' 12.123" E
194	23° 49' 11.357" N	90° 20' 11.609" E
195	23° 49' 12.830" N	90° 20' 11.746" E
196	23° 49' 14.029" N	90° 20' 11.951" E
197	23° 49' 14.646" N	90° 20' 12.294" E
198	23° 49' 16.428" N	90° 20' 13.151" E
199	23° 49' 17.319" N	90° 20' 13.939" E
200	23° 49' 18.449" N	90° 20' 14.795" E
201	23° 49' 19.066" N	90° 20' 15.515" E
202	23° 49' 19.614" N	90° 20' 15.857" E
203	23° 49' 20.882" N	90° 20' 16.783" E
204	23° 49' 21.533" N	90° 20' 17.639" E
205	23° 49' 25.268" N	90° 20' 20.963" E
206	23° 49' 25.782" N	90° 20' 21.682" E
207	23° 49' 26.124" N	90° 20' 22.128" E
208	23° 49' 26.604" N	90° 20' 22.882" E
209	23° 49' 27.461" N	90° 20' 23.704" E
210	23° 49' 27.769" N	90° 20' 24.184" E
211	23° 49' 30.031" N	90° 20' 27.165" E
212	23° 49' 30.442" N	90° 20' 27.918" E
213	23° 49' 30.819" N	90° 20' 28.706" E
214	23° 49' 31.196" N	90° 20' 29.700" E
215	23° 49' 31.778" N	90° 20' 30.077" E
216	23° 49' 32.326" N	90° 20' 30.968" E
217	23° 49' 33.286" N	90° 20' 31.996" E
218	23° 49' 34.793" N	90° 20' 32.578" E
219	23° 49' 35.924" N	90° 20' 33.469" E
220	23° 49' 36.918" N	90° 20' 33.229" E
221	23° 49' 38.391" N	90° 20' 33.332" E
222	23° 49' 39.316" N	90° 20' 32.647" E
223	23° 49' 39.042" N	90° 20' 33.572" E
224	23° 49' 39.111" N	90° 20' 31.071" E
225	23° 49' 50.014" N	90° 20' 14.871" E
226	23° 49' 49.129" N	90° 20' 15.487" E
227	23° 49' 48.698" N	90° 20' 16.207" E
228	23° 49' 48.287" N	90° 20' 17.070" E
229	23° 49' 47.855" N	90° 20' 18.119" E
230	23° 49' 47.361" N	90° 20' 19.393" E
231	23° 49' 47.156" N	90° 20' 20.915" E
232	23° 49' 46.786" N	90° 20' 22.004" E
233	23° 49' 46.087" N	90° 20' 23.115" E
234	23° 49' 45.203" N	90° 20' 23.814" E
235	23° 49' 44.750" N	90° 20' 24.264" E
236	23° 49' 43.250" N	90° 20' 25.129" E
237	23° 49' 43.949" N	90° 20' 24.615" E
238	23° 49' 51.000" N	90° 20' 14.686" E
239	23° 50' 7.242" N	90° 20' 18.612" E
240	23° 50' 8.249" N	90° 20' 18.366" E
241	23° 50' 9.359" N	90° 20' 17.564" E
242	23° 50' 16.986" N	90° 20' 17.934" E
243	23° 50' 18.014" N	90° 20' 18.551" E
244	23° 50' 18.672" N	90° 20' 19.208" E
245	23° 50' 19.412" N	90° 20' 19.928" E
246	23° 50' 20.749" N	90° 20' 21.223" E
247	23° 50' 21.756" N	90° 20' 22.436" E
248	23° 50' 21.406" N	90° 20' 22.087" E
249	23° 50' 22.537" N	90° 20' 23.238" E
250	23° 50' 23.318" N	90° 20' 24.328" E
251	23° 50' 23.935" N	90° 20' 25.314" E

252	23° 50' 24.490" N	90° 20' 26.178" E
253	23° 50' 25.210" N	90° 20' 27.288" E
254	23° 50' 25.832" N	90° 20' 28.396" E
255	23° 50' 26.700" N	90° 20' 29.191" E
256	23° 50' 27.738" N	90° 20' 29.817" E
257	23° 50' 28.561" N	90° 20' 30.228" E
258	23° 50' 29.301" N	90° 20' 30.228" E
259	23° 50' 30.267" N	90° 20' 30.104" E
260	23° 50' 31.521" N	90° 20' 29.673" E
261	23° 50' 32.467" N	90° 20' 29.220" E
262	23° 50' 33.618" N	90° 20' 28.151" E
263	23° 50' 34.954" N	90° 20' 27.514" E
264	23° 50' 36.085" N	90° 20' 26.239" E
265	23° 50' 37.298" N	90° 20' 25.006" E
266	23° 50' 38.182" N	90° 20' 24.101" E
267	23° 50' 38.943" N	90° 20' 23.238" E
268	23° 50' 39.560" N	90° 20' 22.333" E
269	23° 50' 40.793" N	90° 20' 21.388" E
270	23° 50' 41.492" N	90° 20' 20.504" E
271	23° 50' 42.499" N	90° 20' 19.455" E
272	23° 50' 43.383" N	90° 20' 18.222" E
273	23° 50' 51.936" N	90° 20' 15.508" E
274	23° 50' 50.620" N	90° 20' 14.891" E
275	23° 50' 58.186" N	90° 20' 21.347" E
276	23° 50' 59.193" N	90° 20' 21.737" E
277	23° 51' 0.015" N	90° 20' 21.737" E
278	23° 51' 4.949" N	90° 20' 21.614" E
279	23° 51' 6.203" N	90° 20' 21.799" E
280	23° 51' 7.211" N	90° 20' 22.457" E
281	23° 51' 8.300" N	90° 20' 23.217" E
282	23° 51' 9.205" N	90° 20' 24.430" E
283	23° 51' 9.555" N	90° 20' 24.739" E
284	23° 51' 10.027" N	90° 20' 25.109" E
285	23° 51' 10.911" N	90° 20' 25.355" E
286	23° 51' 11.590" N	90° 20' 25.767" E
287	23° 51' 12.392" N	90° 20' 26.342" E
288	23° 51' 12.885" N	90° 20' 26.856" E
289	23° 51' 13.563" N	90° 20' 27.267" E
290	23° 51' 14.221" N	90° 20' 27.822" E
291	23° 51' 14.879" N	90° 20' 28.357" E
292	23° 51' 15.558" N	90° 20' 28.912" E
293	23° 51' 16.215" N	90° 20' 29.323" E
294	23° 51' 16.627" N	90° 20' 29.734" E
295	23° 51' 17.531" N	90° 20' 30.331" E
296	23° 51' 18.374" N	90° 20' 30.968" E
297	23° 51' 18.929" N	90° 20' 31.482" E
298	23° 51' 26.652" N	90° 20' 39.232" E
299	23° 51' 27.201" N	90° 20' 40.027" E
300	23° 51' 28.133" N	90° 20' 40.959" E
301	23° 51' 28.928" N	90° 20' 42.138" E
302	23° 51' 29.585" N	90° 20' 42.960" E
303	23° 51' 30.079" N	90° 20' 43.646" E
304	23° 51' 30.600" N	90° 20' 44.715" E
305	23° 51' 31.175" N	90° 20' 45.318" E
306	23° 51' 47.129" N	90° 20' 55.652" E
307	23° 51' 47.978" N	90° 20' 56.474" E
308	23° 51' 49.020" N	90° 20' 57.159" E
309	23° 51' 49.870" N	90° 20' 57.790" E
310	23° 51' 50.583" N	90° 20' 58.640" E
311	23° 51' 51.871" N	90° 20' 59.435" E
312	23° 51' 52.419" N	90° 21' 0.093" E
313	23° 51' 53.378" N	90° 21' 1.134" E
314	23° 51' 54.146" N	90° 21' 1.490" E
315	23° 51' 56.861" N	90° 21' 2.441" E
316	23° 51' 57.271" N	90° 21' 2.477" E
317	23° 51' 58.203" N	90° 21' 2.861" E

318	23° 51' 59.080" N	90° 21' 3.135" E
319	23° 51' 59.628" N	90° 21' 3.217" E
320	23° 52' 1.465" N	90° 21' 3.601" E
321	23° 52' 4.946" N	90° 21' 3.930" E
322	23° 52' 6.043" N	90° 21' 4.095" E
323	23° 53' 31.950" N	90° 21' 37.070" E
324	23° 53' 31.731" N	90° 21' 37.838" E
325	23° 53' 30.908" N	90° 21' 37.674" E
326	23° 53' 29.921" N	90° 21' 37.070" E
327	23° 53' 27.290" N	90° 21' 34.987" E
328	23° 53' 26.139" N	90° 21' 33.562" E
329	23° 53' 24.658" N	90° 21' 31.588" E
330	23° 53' 23.233" N	90° 21' 30.163" E
331	23° 53' 22.246" N	90° 21' 28.847" E
332	23° 53' 21.095" N	90° 21' 28.244" E
333	23° 53' 19.012" N	90° 21' 28.244" E
334	23° 53' 16.380" N	90° 21' 28.847" E
335	23° 53' 14.233" N	90° 21' 29.729" E
336	23° 53' 12.488" N	90° 21' 30.327" E
337	23° 53' 11.062" N	90° 21' 30.821" E
338	23° 53' 9.144" N	90° 21' 31.369" E
339	23° 53' 7.115" N	90° 21' 31.698" E
340	23° 53' 5.141" N	90° 21' 32.191" E
341	23° 53' 3.278" N	90° 21' 32.246" E
342	23° 53' 0.756" N	90° 21' 32.027" E
343	23° 52' 59.275" N	90° 21' 31.917" E
344	23° 52' 57.197" N	90° 21' 31.250" E
345	23° 52' 55.548" N	90° 21' 29.834" E
346	23° 52' 54.287" N	90° 21' 28.408" E
347	23° 52' 53.080" N	90° 21' 25.667" E
348	23° 52' 52.148" N	90° 21' 23.310" E
349	23° 52' 44.199" N	90° 21' 15.580" E
350	23° 52' 45.368" N	90° 21' 17.582" E
351	23° 52' 46.557" N	90° 21' 18.814" E
352	23° 52' 41.859" N	90° 21' 13.034" E
353	23° 52' 41.311" N	90° 21' 12.520" E
354	23° 52' 40.711" N	90° 21' 11.955" E
355	23° 52' 40.043" N	90° 21' 11.407" E
356	23° 52' 39.769" N	90° 21' 11.064" E
357	23° 52' 37.165" N	90° 21' 6.421" E
358	23° 52' 37.336" N	90° 21' 5.667" E
359	23° 52' 37.610" N	90° 21' 4.811" E
360	23° 52' 37.782" N	90° 21' 3.731" E
361	23° 52' 37.764" N	90° 21' 2.772" E
362	23° 52' 36.565" N	90° 21' 1.933" E
363	23° 52' 35.537" N	90° 21' 1.795" E
364	23° 52' 35.040" N	90° 21' 1.590" E
365	23° 52' 34.098" N	90° 21' 1.504" E
366	23° 52' 32.779" N	90° 21' 1.487" E
367	23° 52' 31.648" N	90° 21' 1.538" E
368	23° 52' 30.963" N	90° 21' 1.915" E
369	23° 52' 27.160" N	90° 21' 2.189" E
370	23° 52' 26.457" N	90° 21' 2.344" E
371	23° 52' 25.752" N	90° 21' 2.695" E
372	23° 52' 25.104" N	90° 21' 2.858" E
373	23° 52' 15.801" N	90° 21' 3.714" E
374	23° 52' 17.326" N	90° 21' 3.440" E
375	23° 52' 18.491" N	90° 21' 3.252" E
376	23° 52' 22.191" N	90° 21' 3.012" E
377	23° 52' 13.899" N	90° 21' 3.611" E
378	23° 52' 12.100" N	90° 21' 4.228" E
379	23° 52' 10.233" N	90° 21' 4.160" E
380	23° 52' 9.805" N	90° 21' 4.143" E
381	23° 51' 51.388" N	90° 20' 58.952" E
382	23° 51' 49.469" N	90° 20' 57.512" E
383	23° 51' 52.998" N	90° 21' 0.562" E

Annexure : 5- Table of the geographic coordinates of Turagh River
West bank pillars having watermark

The geographic coordinates of the faulty West bank pillars of Turag are provided in the table

Serial	Latitude	Longitude	38	23° 44' 53.603" N	90° 20' 10.748" E	76	23° 45' 41.792" N	90° 20' 13.603" E
1	23° 52' 55.765" N	90° 21' 25.970" E	39	23° 44' 53.484" N	90° 20' 9.175" E	77	23° 45' 44.538" N	90° 20' 14.899" E
2	23° 52' 45.210" N	90° 21' 13.902" E	40	23° 44' 53.614" N	90° 20' 8.646" E	78	23° 45' 45.724" N	90° 20' 15.769" E
3	23° 48' 51.750" N	90° 20' 20.152" E	41	23° 44' 53.545" N	90° 20' 7.991" E	79	23° 45' 46.778" N	90° 20' 16.248" E
4	23° 48' 51.129" N	90° 20' 20.082" E	42	23° 44' 52.688" N	90° 20' 4.934" E	80	23° 45' 50.246" N	90° 20' 16.561" E
5	23° 48' 50.617" N	90° 20' 19.658" E	43	23° 44' 52.544" N	90° 20' 3.728" E	81	23° 45' 50.916" N	90° 20' 16.777" E
6	23° 48' 49.949" N	90° 20' 19.309" E	44	23° 44' 52.475" N	90° 20' 2.741" E	82	23° 45' 52.392" N	90° 20' 17.375" E
7	23° 48' 53.712" N	90° 20' 20.703" E	45	23° 44' 53.099" N	90° 20' 0.748" E	83	23° 45' 53.475" N	90° 20' 17.962" E
8	23° 48' 53.298" N	90° 20' 20.484" E	46	23° 44' 52.930" N	90° 19' 59.714" E	84	23° 45' 57.966" N	90° 20' 20.961" E
9	23° 48' 52.433" N	90° 20' 20.140" E	47	23° 44' 52.940" N	90° 19' 58.598" E	85	23° 45' 58.812" N	90° 20' 21.779" E
10	23° 44' 34.029" N	90° 20' 41.826" E	48	23° 44' 53.250" N	90° 19' 57.655" E	86	23° 46' 0.149" N	90° 20' 23.363" E
11	23° 44' 34.380" N	90° 20' 41.288" E	49	23° 44' 53.372" N	90° 19' 57.281" E	87	23° 46' 2.327" N	90° 20' 24.742" E
12	23° 44' 34.696" N	90° 20' 40.002" E	50	23° 44' 53.556" N	90° 19' 56.834" E	88	23° 46' 12.346" N	90° 20' 30.365" E
13	23° 44' 42.104" N	90° 20' 26.560" E	51	23° 44' 53.729" N	90° 19' 55.366" E	89	23° 46' 16.795" N	90° 20' 25.912" E
14	23° 44' 46.782" N	90° 20' 22.628" E	52	23° 44' 55.893" N	90° 19' 47.574" E	90	23° 46' 17.947" N	90° 20' 24.595" E
15	23° 44' 48.239" N	90° 20' 23.451" E	53	23° 44' 56.249" N	90° 19' 46.630" E	91	23° 46' 21.569" N	90° 20' 19.519" E
16	23° 44' 47.998" N	90° 20' 22.520" E	54	23° 44' 56.872" N	90° 19' 46.105" E	92	23° 46' 21.792" N	90° 20' 18.997" E
17	23° 44' 46.923" N	90° 20' 26.047" E	55	23° 44' 57.477" N	90° 19' 45.182" E	93	23° 46' 21.900" N	90° 20' 18.448" E
18	23° 44' 47.790" N	90° 20' 24.616" E	56	23° 44' 59.882" N	90° 19' 43.604" E	94	23° 46' 22.042" N	90° 20' 17.742" E
19	23° 44' 47.548" N	90° 20' 27.156" E	57	23° 45' 1.555" N	90° 19' 43.010" E	95	23° 46' 22.090" N	90° 20' 16.965" E
20	23° 44' 48.304" N	90° 20' 26.357" E	58	23° 45' 2.503" N	90° 19' 42.841" E	96	23° 46' 21.942" N	90° 20' 16.125" E
21	23° 44' 49.277" N	90° 20' 25.310" E	59	23° 45' 3.832" N	90° 19' 42.625" E	97	23° 46' 21.599" N	90° 20' 15.167" E
22	23° 44' 49.701" N	90° 20' 25.108" E	60	23° 45' 4.764" N	90° 19' 42.405" E	98	23° 46' 34.627" N	90° 20' 2.424" E
23	23° 44' 50.351" N	90° 20' 24.356" E	61	23° 45' 5.308" N	90° 19' 42.297" E	99	23° 46' 35.428" N	90° 20' 3.073" E
24	23° 44' 53.812" N	90° 20' 21.332" E	62	23° 45' 6.676" N	90° 19' 41.721" E	100	23° 46' 37.951" N	90° 20' 4.838" E
25	23° 44' 53.598" N	90° 20' 20.532" E	63	23° 45' 7.371" N	90° 19' 41.854" E	101	23° 46' 38.750" N	90° 20' 5.103" E
26	23° 44' 53.869" N	90° 20' 19.456" E	64	23° 45' 13.320" N	90° 19' 47.212" E	102	23° 46' 39.351" N	90° 20' 5.723" E
27	23° 44' 54.100" N	90° 20' 17.785" E	65	23° 45' 13.662" N	90° 19' 47.528" E	103	23° 46' 39.858" N	90° 20' 6.293" E
28	23° 44' 53.890" N	90° 20' 18.423" E	66	23° 45' 14.036" N	90° 19' 48.101" E	104	23° 46' 40.450" N	90° 20' 6.638" E
29	23° 44' 53.978" N	90° 20' 18.906" E	67	23° 45' 14.656" N	90° 19' 49.354" E	105	23° 46' 43.232" N	90° 20' 10.085" E
30	23° 44' 54.154" N	90° 20' 16.877" E	68	23° 45' 17.863" N	90° 19' 52.781" E	106	23° 46' 43.650" N	90° 20' 10.656" E
31	23° 44' 54.240" N	90° 20' 15.605" E	69	23° 45' 18.450" N	90° 19' 53.188" E	107	23° 46' 44.035" N	90° 20' 11.255" E
32	23° 44' 54.100" N	90° 20' 14.996" E	70	23° 45' 18.799" N	90° 19' 53.479" E	108	23° 46' 44.909" N	90° 20' 11.729" E
33	23° 44' 53.902" N	90° 20' 14.122" E	71	23° 45' 21.499" N	90° 19' 56.032" E	109	23° 46' 49.367" N	90° 20' 9.621" E
34	23° 44' 53.797" N	90° 20' 13.168" E	72	23° 45' 22.446" N	90° 19' 56.618" E	110	23° 46' 50.266" N	90° 20' 8.770" E
35	23° 44' 53.707" N	90° 20' 12.721" E	73	23° 45' 23.000" N	90° 19' 57.047" E	111	23° 46' 50.785" N	90° 20' 7.983" E
36	23° 44' 53.646" N	90° 20' 12.023" E	74	23° 45' 27.155" N	90° 20' 1.511" E	112	23° 46' 51.366" N	90° 20' 6.983" E
37	23° 44' 53.653" N	90° 20' 11.242" E	75	23° 45' 36.806" N	90° 20' 9.794" E	113	23° 46' 52.413" N	90° 20' 6.154" E

114	23° 47' 9.366" N	90° 20' 8.236" E	157	23° 48' 55.351" N	90° 20' 20.976" E	200	23° 49' 38.744" N	90° 20' 25.003" E
115	23° 47' 11.000" N	90° 20' 10.169" E	158	23° 48' 55.945" N	90° 20' 21.141" E	201	23° 51' 8.771" N	90° 20' 20.839" E
116	23° 47' 13.078" N	90° 20' 12.422" E	159	23° 48' 56.508" N	90° 20' 21.392" E	202	23° 51' 9.986" N	90° 20' 21.516" E
117	23° 47' 13.704" N	90° 20' 13.308" E	160	23° 48' 57.260" N	90° 20' 21.489" E	203	23° 51' 10.508" N	90° 20' 21.700" E
118	23° 47' 13.907" N	90° 20' 14.225" E	161	23° 48' 58.020" N	90° 20' 21.687" E	204	23° 51' 11.095" N	90° 20' 22.117" E
119	23° 47' 15.332" N	90° 20' 14.960" E	162	23° 48' 58.473" N	90° 20' 22.054" E	205	23° 51' 11.466" N	90° 20' 22.463" E
120	23° 47' 15.772" N	90° 20' 15.100" E	163	23° 48' 58.974" N	90° 20' 22.242" E	206	23° 51' 12.182" N	90° 20' 22.988" E
121	23° 47' 16.146" N	90° 20' 15.345" E	164	23° 48' 59.449" N	90° 20' 22.411" E	207	23° 51' 12.978" N	90° 20' 23.633" E
122	23° 47' 17.038" N	90° 20' 15.223" E	165	23° 48' 59.974" N	90° 20' 22.605" E	208	23° 51' 13.838" N	90° 20' 24.371" E
123	23° 47' 17.797" N	90° 20' 15.637" E	166	23° 49' 0.668" N	90° 20' 23.059" E	209	23° 51' 15.311" N	90° 20' 25.292" E
124	23° 47' 20.875" N	90° 20' 17.840" E	167	23° 49' 2.496" N	90° 20' 23.957" E	210	23° 51' 16.092" N	90° 20' 26.009" E
125	23° 47' 21.469" N	90° 20' 18.355" E	168	23° 49' 4.246" N	90° 20' 21.037" E	211	23° 51' 16.992" N	90° 20' 26.909" E
126	23° 47' 22.265" N	90° 20' 18.628" E	169	23° 49' 4.073" N	90° 20' 19.972" E	212	23° 51' 18.037" N	90° 20' 27.590" E
127	23° 47' 23.250" N	90° 20' 19.121" E	170	23° 49' 4.012" N	90° 20' 19.284" E	213	23° 51' 18.620" N	90° 20' 28.151" E
128	23° 47' 24.082" N	90° 20' 19.611" E	171	23° 49' 4.004" N	90° 20' 18.737" E	214	23° 51' 55.710" N	90° 20' 59.489" E
129	23° 47' 25.829" N	90° 20' 20.477" E	172	23° 49' 4.105" N	90° 20' 17.711" E	215	23° 51' 57.053" N	90° 21' 0.090" E
130	23° 47' 28.903" N	90° 20' 21.206" E	173	23° 49' 4.296" N	90° 20' 16.487" E	216	23° 51' 58.694" N	90° 21' 0.781" E
131	23° 47' 30.167" N	90° 20' 21.314" E	174	23° 49' 4.444" N	90° 20' 15.292" E	217	23° 52' 0.167" N	90° 21' 0.824" E
132	23° 47' 31.577" N	90° 20' 20.990" E	175	23° 49' 4.573" N	90° 20' 14.168" E	218	23° 52' 1.250" N	90° 21' 0.986" E
133	23° 47' 32.344" N	90° 20' 20.806" E	176	23° 49' 4.901" N	90° 20' 12.869" E	219	23° 52' 2.075" N	90° 21' 1.098" E
134	23° 47' 33.554" N	90° 20' 20.694" E	177	23° 49' 6.413" N	90° 20' 11.792" E	220	23° 52' 2.737" N	90° 21' 1.174" E
135	23° 47' 36.582" N	90° 20' 20.925" E	178	23° 49' 7.226" N	90° 20' 11.281" E	221	23° 52' 3.425" N	90° 21' 1.253" E
136	23° 47' 37.317" N	90° 20' 21.112" E	179	23° 49' 8.522" N	90° 20' 10.172" E	222	23° 52' 3.997" N	90° 21' 1.303" E
137	23° 47' 37.828" N	90° 20' 21.256" E	180	23° 49' 9.221" N	90° 20' 9.488" E	223	23° 52' 4.832" N	90° 21' 1.364" E
138	23° 47' 38.721" N	90° 20' 21.472" E	181	23° 49' 9.959" N	90° 20' 9.064" E	224	23° 52' 5.884" N	90° 21' 1.444" E
139	23° 47' 42.983" N	90° 20' 21.822" E	182	23° 49' 10.816" N	90° 20' 8.768" E	225	23° 52' 6.485" N	90° 21' 1.490" E
140	23° 47' 44.455" N	90° 20' 21.638" E	183	23° 49' 11.546" N	90° 20' 8.588" E	226	23° 52' 7.277" N	90° 21' 1.498" E
141	23° 47' 45.881" N	90° 20' 21.253" E	184	23° 49' 12.392" N	90° 20' 8.642" E	227	23° 52' 7.928" N	90° 21' 1.508" E
142	23° 47' 47.710" N	90° 20' 20.422" E	185	23° 49' 12.882" N	90° 20' 8.873" E	228	23° 52' 8.440" N	90° 21' 1.548" E
143	23° 47' 47.987" N	90° 20' 20.346" E	186	23° 49' 13.584" N	90° 20' 9.258" E	229	23° 52' 9.246" N	90° 21' 1.620" E
144	23° 47' 48.152" N	90° 20' 20.299" E	187	23° 49' 14.981" N	90° 20' 9.852" E	230	23° 52' 9.980" N	90° 21' 1.699" E
145	23° 47' 51.281" N	90° 20' 20.317" E	188	23° 49' 15.640" N	90° 20' 10.118" E	231	23° 52' 11.023" N	90° 21' 1.688" E
146	23° 47' 52.332" N	90° 20' 20.353" E	189	23° 49' 16.280" N	90° 20' 10.439" E	232	23° 52' 11.448" N	90° 21' 1.630" E
147	23° 47' 52.919" N	90° 20' 20.659" E	190	23° 49' 17.846" N	90° 20' 11.512" E	233	23° 52' 12.013" N	90° 21' 1.540" E
148	23° 47' 53.858" N	90° 20' 21.815" E	191	23° 49' 30.544" N	90° 20' 23.927" E	234	23° 52' 12.312" N	90° 21' 1.511" E
149	23° 47' 54.704" N	90° 20' 23.528" E	192	23° 49' 30.906" N	90° 20' 24.638" E	235	23° 52' 12.676" N	90° 21' 1.504" E
150	23° 47' 55.698" N	90° 20' 26.286" E	193	23° 49' 31.688" N	90° 20' 25.455" E	236	23° 52' 13.052" N	90° 21' 1.186" E
151	23° 47' 56.285" N	90° 20' 27.305" E	194	23° 49' 32.372" N	90° 20' 26.096" E	237	23° 52' 13.401" N	90° 21' 1.168" E
152	23° 47' 56.746" N	90° 20' 27.895" E	195	23° 49' 33.351" N	90° 20' 27.097" E	238	23° 52' 13.718" N	90° 21' 1.143" E
153	23° 47' 58.495" N	90° 20' 29.857" E	196	23° 49' 37.232" N	90° 20' 28.010" E	239	23° 52' 14.039" N	90° 21' 1.125" E
154	23° 47' 59.140" N	90° 20' 30.203" E	197	23° 49' 37.766" N	90° 20' 27.088" E	240	23° 52' 14.622" N	90° 21' 1.064" E
155	23° 48' 1.710" N	90° 20' 31.704" E	198	23° 49' 38.171" N	90° 20' 26.193" E	241	23° 52' 14.928" N	90° 21' 1.028" E
156	23° 48' 54.455" N	90° 20' 20.672" E	199	23° 49' 38.226" N	90° 20' 25.827" E	242	23° 52' 15.212" N	90° 21' 0.981" E

243	23° 52' 15.709" N	90° 21' 0.902" E	286	23° 44' 46.593" N	90° 20' 21.925" E	329	23° 46' 14.656" N	90° 20' 29.094" E
244	23° 52' 16.217" N	90° 21' 0.779" E	287	23° 44' 41.878" N	90° 20' 27.407" E	330	23° 46' 15.396" N	90° 20' 27.490" E
245	23° 52' 16.381" N	90° 21' 0.837" E	288	23° 45' 8.622" N	90° 19' 41.727" E	331	23° 46' 16.136" N	90° 20' 26.586" E
246	23° 52' 16.798" N	90° 21' 0.772" E	289	23° 45' 10.472" N	90° 19' 43.166" E	332	23° 46' 18.480" N	90° 20' 23.502" E
247	23° 52' 17.306" N	90° 21' 0.697" E	290	23° 45' 11.788" N	90° 19' 44.852" E	333	23° 46' 19.467" N	90° 20' 22.350" E
248	23° 52' 17.932" N	90° 21' 0.625" E	291	23° 45' 12.692" N	90° 19' 46.537" E	334	23° 46' 20.412" N	90° 20' 20.870" E
249	23° 52' 18.505" N	90° 21' 0.542" E	292	23° 45' 15.530" N	90° 19' 50.485" E	335	23° 46' 21.358" N	90° 20' 20.212" E
250	23° 52' 18.948" N	90° 21' 0.492" E	293	23° 45' 16.928" N	90° 19' 51.759" E	336	23° 46' 21.779" N	90° 20' 11.927" E
251	23° 52' 19.527" N	90° 21' 0.430" E	294	23° 45' 19.477" N	90° 19' 53.897" E	337	23° 46' 22.283" N	90° 20' 10.200" E
252	23° 52' 20.107" N	90° 21' 0.358" E	295	23° 45' 20.710" N	90° 19' 55.049" E	338	23° 46' 23.044" N	90° 20' 8.453" E
253	23° 52' 20.852" N	90° 21' 0.268" E	296	23° 45' 23.876" N	90° 19' 57.927" E	339	23° 46' 23.003" N	90° 20' 6.233" E
254	23° 52' 21.439" N	90° 21' 0.211" E	297	23° 45' 25.644" N	90° 19' 59.037" E	340	23° 46' 22.550" N	90° 20' 5.287" E
255	23° 52' 22.141" N	90° 21' 0.128" E	298	23° 45' 26.919" N	90° 20' 0.065" E	341	23° 46' 21.481" N	90° 20' 4.218" E
256	23° 52' 22.807" N	90° 21' 0.067" E	299	23° 45' 9.485" N	90° 19' 42.179" E	342	23° 46' 21.070" N	90° 20' 3.560" E
257	23° 52' 24.512" N	90° 21' 0.286" E	300	23° 44' 58.672" N	90° 19' 44.070" E	343	23° 46' 21.605" N	90° 20' 2.409" E
258	23° 52' 25.175" N	90° 21' 0.257" E	301	23° 45' 28.029" N	90° 20' 2.614" E	344	23° 46' 22.263" N	90° 20' 1.463" E
259	23° 52' 25.626" N	90° 21' 0.153" E	302	23° 45' 29.180" N	90° 20' 3.642" E	345	23° 46' 23.208" N	90° 20' 0.435" E
260	23° 52' 26.477" N	90° 21' 0.000" E	303	23° 45' 30.496" N	90° 20' 4.588" E	346	23° 46' 24.442" N	90° 19' 59.654" E
261	23° 52' 27.147" N	90° 21' 0.000" E	304	23° 45' 31.894" N	90° 20' 5.534" E	347	23° 46' 25.346" N	90° 19' 58.667" E
262	23° 52' 28.012" N	90° 20' 59.612" E	305	23° 45' 32.675" N	90° 20' 6.233" E	348	23° 46' 25.429" N	90° 19' 57.310" E
263	23° 52' 28.700" N	90° 20' 59.612" E	306	23° 45' 33.868" N	90° 20' 7.055" E	349	23° 46' 26.251" N	90° 19' 55.912" E
264	23° 52' 29.341" N	90° 20' 59.615" E	307	23° 45' 34.772" N	90° 20' 8.165" E	350	23° 46' 27.402" N	90° 19' 55.419" E
265	23° 52' 32.131" N	90° 20' 58.388" E	308	23° 45' 36.129" N	90° 20' 9.070" E	351	23° 46' 28.841" N	90° 19' 55.090" E
266	23° 52' 32.844" N	90° 20' 58.399" E	309	23° 45' 37.609" N	90° 20' 10.427" E	352	23° 46' 30.404" N	90° 19' 55.008" E
267	23° 52' 33.615" N	90° 20' 58.431" E	310	23° 45' 38.555" N	90° 20' 11.084" E	353	23° 46' 31.555" N	90° 19' 55.172" E
268	23° 52' 34.410" N	90° 20' 58.478" E	311	23° 45' 39.377" N	90° 20' 12.030" E	354	23° 46' 32.665" N	90° 19' 55.090" E
269	23° 52' 35.184" N	90° 20' 58.557" E	312	23° 45' 40.405" N	90° 20' 12.852" E	355	23° 46' 33.734" N	90° 19' 54.761" E
270	23° 44' 35.053" N	90° 20' 39.743" E	313	23° 45' 42.914" N	90° 20' 13.305" E	356	23° 46' 34.515" N	90° 19' 55.378" E
271	23° 44' 35.026" N	90° 20' 38.920" E	314	23° 45' 43.818" N	90° 20' 14.168" E	357	23° 46' 34.762" N	90° 19' 56.611" E
272	23° 44' 36.012" N	90° 20' 38.701" E	315	23° 45' 48.177" N	90° 20' 16.183" E	358	23° 46' 34.598" N	90° 19' 57.927" E
273	23° 44' 37.027" N	90° 20' 38.180" E	316	23° 45' 49.410" N	90° 20' 16.265" E	359	23° 46' 34.228" N	90° 19' 59.160" E
274	23° 44' 38.370" N	90° 20' 37.714" E	317	23° 45' 54.714" N	90° 20' 18.157" E	360	23° 46' 33.858" N	90° 20' 0.271" E
275	23° 44' 39.603" N	90° 20' 36.837" E	318	23° 45' 56.030" N	90° 20' 19.390" E	361	23° 46' 33.734" N	90° 20' 1.422" E
276	23° 44' 40.426" N	90° 20' 35.603" E	319	23° 45' 57.263" N	90° 20' 20.459" E	362	23° 46' 21.265" N	90° 20' 14.168" E
277	23° 44' 40.809" N	90° 20' 34.397" E	320	23° 46' 3.801" N	90° 20' 25.558" E	363	23° 46' 21.430" N	90° 20' 13.017" E
278	23° 44' 42.454" N	90° 20' 31.382" E	321	23° 46' 5.240" N	90° 20' 25.845" E	364	23° 46' 21.584" N	90° 20' 12.297" E
279	23° 44' 42.701" N	90° 20' 31.190" E	322	23° 46' 6.433" N	90° 20' 26.174" E	365	23° 46' 21.944" N	90° 20' 10.920" E
280	23° 44' 42.262" N	90° 20' 29.820" E	323	23° 46' 6.720" N	90° 20' 27.655" E	366	23° 46' 36.242" N	90° 20' 3.625" E
281	23° 44' 41.988" N	90° 20' 28.202" E	324	23° 46' 7.173" N	90° 20' 29.423" E	367	23° 46' 37.202" N	90° 20' 4.173" E
282	23° 44' 41.714" N	90° 20' 25.187" E	325	23° 46' 7.830" N	90° 20' 30.985" E	368	23° 46' 41.793" N	90° 20' 7.771" E
283	23° 44' 42.482" N	90° 20' 23.186" E	326	23° 46' 9.475" N	90° 20' 31.026" E	369	23° 46' 42.341" N	90° 20' 8.456" E
284	23° 44' 43.742" N	90° 20' 21.596" E	327	23° 46' 11.120" N	90° 20' 30.738" E	370	23° 46' 42.924" N	90° 20' 9.244" E
285	23° 44' 45.497" N	90° 20' 21.075" E	328	23° 46' 13.258" N	90° 20' 29.998" E	371	23° 46' 41.142" N	90° 20' 7.154" E

372	23° 46' 45.528" N	90° 20' 11.780" E	415	23° 47' 48.471" N	90° 20' 19.969" E	458	23° 49' 5.497" N	90° 20' 21.511" E
373	23° 46' 46.316" N	90° 20' 11.677" E	416	23° 47' 49.122" N	90° 20' 19.935" E	459	23° 49' 4.983" N	90° 20' 22.710" E
374	23° 46' 47.036" N	90° 20' 11.540" E	417	23° 47' 50.116" N	90° 20' 20.003" E	460	23° 49' 4.504" N	90° 20' 23.601" E
375	23° 46' 48.132" N	90° 20' 10.786" E	418	23° 47' 55.324" N	90° 20' 24.698" E	461	23° 49' 3.407" N	90° 20' 23.670" E
376	23° 46' 48.680" N	90° 20' 10.204" E	419	23° 47' 54.331" N	90° 20' 22.676" E	462	23° 49' 4.332" N	90° 20' 22.882" E
377	23° 46' 51.798" N	90° 20' 6.400" E	420	23° 47' 56.832" N	90° 20' 28.672" E	463	23° 49' 18.621" N	90° 20' 11.711" E
378	23° 46' 53.100" N	90° 20' 6.161" E	421	23° 47' 57.894" N	90° 20' 29.734" E	464	23° 49' 19.374" N	90° 20' 12.602" E
379	23° 46' 53.786" N	90° 20' 5.886" E	422	23° 47' 59.984" N	90° 20' 30.385" E	465	23° 49' 20.197" N	90° 20' 12.362" E
380	23° 46' 54.539" N	90° 20' 5.647" E	423	23° 48' 0.258" N	90° 20' 31.173" E	466	23° 49' 20.642" N	90° 20' 12.260" E
381	23° 46' 54.951" N	90° 20' 5.510" E	424	23° 48' 2.520" N	90° 20' 31.756" E	467	23° 49' 21.019" N	90° 20' 13.151" E
382	23° 46' 55.499" N	90° 20' 5.338" E	425	23° 48' 3.548" N	90° 20' 31.345" E	468	23° 49' 21.602" N	90° 20' 14.247" E
383	23° 46' 56.458" N	90° 20' 4.859" E	426	23° 48' 4.233" N	90° 20' 29.769" E	469	23° 49' 22.218" N	90° 20' 15.001" E
384	23° 46' 57.144" N	90° 20' 4.550" E	427	23° 48' 5.672" N	90° 20' 28.809" E	470	23° 49' 22.835" N	90° 20' 15.412" E
385	23° 46' 58.172" N	90° 20' 4.208" E	428	23° 48' 7.454" N	90° 20' 27.713" E	471	23° 49' 23.657" N	90° 20' 16.303" E
386	23° 47' 0.844" N	90° 20' 4.002" E	429	23° 48' 8.961" N	90° 20' 27.336" E	472	23° 49' 24.206" N	90° 20' 16.680" E
387	23° 47' 1.598" N	90° 20' 4.139" E	430	23° 48' 9.887" N	90° 20' 27.439" E	473	23° 49' 35.307" N	90° 20' 29.015" E
388	23° 47' 2.043" N	90° 20' 4.550" E	431	23° 48' 11.120" N	90° 20' 28.227" E	474	23° 49' 36.438" N	90° 20' 29.083" E
389	23° 47' 8.382" N	90° 20' 7.120" E	432	23° 48' 13.347" N	90° 20' 28.809" E	475	23° 49' 37.603" N	90° 20' 27.439" E
390	23° 47' 10.267" N	90° 20' 9.210" E	433	23° 48' 17.219" N	90° 20' 28.090" E	476	23° 49' 39.117" N	90° 20' 24.574" E
391	23° 47' 10.404" N	90° 20' 8.011" E	434	23° 48' 18.830" N	90° 20' 26.548" E	477	23° 49' 39.693" N	90° 20' 23.937" E
392	23° 47' 12.014" N	90° 20' 12.328" E	435	23° 48' 15.814" N	90° 20' 27.165" E	478	23° 49' 40.310" N	90° 20' 23.526" E
393	23° 47' 8.348" N	90° 20' 6.298" E	436	23° 48' 19.515" N	90° 20' 25.657" E	479	23° 49' 41.112" N	90° 20' 22.950" E
394	23° 47' 20.615" N	90° 20' 17.125" E	437	23° 48' 18.830" N	90° 20' 22.882" E	480	23° 49' 41.646" N	90° 20' 22.744" E
395	23° 47' 19.998" N	90° 20' 16.851" E	438	23° 48' 19.618" N	90° 20' 22.710" E	481	23° 49' 42.222" N	90° 20' 22.580" E
396	23° 47' 19.278" N	90° 20' 16.440" E	439	23° 48' 18.555" N	90° 20' 24.732" E	482	23° 49' 42.818" N	90° 20' 22.395" E
397	23° 47' 18.524" N	90° 20' 15.994" E	440	23° 48' 24.449" N	90° 20' 21.340" E	483	23° 49' 43.455" N	90° 20' 22.210" E
398	23° 47' 17.497" N	90° 20' 15.412" E	441	23° 48' 26.710" N	90° 20' 20.723" E	484	23° 49' 43.723" N	90° 20' 22.025" E
399	23° 47' 14.618" N	90° 20' 14.829" E	442	23° 48' 28.184" N	90° 20' 19.969" E	485	23° 49' 44.195" N	90° 20' 21.675" E
400	23° 47' 11.397" N	90° 20' 11.917" E	443	23° 48' 29.691" N	90° 20' 19.147" E	486	23° 49' 44.483" N	90° 20' 21.161" E
401	23° 47' 10.952" N	90° 20' 10.923" E	444	23° 48' 23.352" N	90° 20' 21.100" E	487	23° 49' 44.853" N	90° 20' 20.565" E
402	23° 47' 25.000" N	90° 20' 20.038" E	445	23° 48' 30.377" N	90° 20' 18.770" E	488	23° 49' 45.162" N	90° 20' 19.866" E
403	23° 47' 26.988" N	90° 20' 20.963" E	446	23° 48' 31.953" N	90° 20' 18.290" E	489	23° 49' 45.141" N	90° 20' 19.126" E
404	23° 47' 28.393" N	90° 20' 21.100" E	447	23° 48' 32.981" N	90° 20' 17.879" E	490	23° 49' 45.059" N	90° 20' 18.612" E
405	23° 47' 29.558" N	90° 20' 21.168" E	448	23° 48' 34.248" N	90° 20' 17.639" E	491	23° 49' 44.175" N	90° 20' 18.612" E
406	23° 47' 34.286" N	90° 20' 20.860" E	449	23° 48' 35.688" N	90° 20' 17.468" E	492	23° 49' 43.640" N	90° 20' 18.489" E
407	23° 47' 35.108" N	90° 20' 20.723" E	450	23° 48' 36.818" N	90° 20' 17.125" E	493	23° 49' 43.558" N	90° 20' 17.872" E
408	23° 47' 36.068" N	90° 20' 20.552" E	451	23° 48' 38.360" N	90° 20' 17.091" E	494	23° 49' 44.216" N	90° 20' 17.543" E
409	23° 47' 39.220" N	90° 20' 21.442" E	452	23° 48' 39.696" N	90° 20' 16.817" E	495	23° 49' 44.463" N	90° 20' 16.762" E
410	23° 47' 39.974" N	90° 20' 21.442" E	453	23° 49' 7.759" N	90° 20' 10.752" E	496	23° 49' 44.709" N	90° 20' 16.042" E
411	23° 47' 41.139" N	90° 20' 21.785" E	454	23° 49' 5.874" N	90° 20' 11.540" E	497	23° 49' 44.977" N	90° 20' 15.446" E
412	23° 47' 42.270" N	90° 20' 21.717" E	455	23° 49' 5.326" N	90° 20' 12.225" E	498	23° 49' 45.347" N	90° 20' 14.891" E
413	23° 47' 46.518" N	90° 20' 21.134" E	456	23° 49' 4.572" N	90° 20' 13.527" E	499	23° 49' 45.820" N	90° 20' 14.028" E
414	23° 47' 47.067" N	90° 20' 20.723" E	457	23° 49' 5.155" N	90° 20' 19.524" E	500	23° 49' 46.149" N	90° 20' 13.267" E

501	23° 49' 47.197" N	90° 20' 12.815" E	544	23° 50' 26.998" N	90° 20' 26.116" E	587	23° 51' 6.286" N	90° 20' 17.728" E
502	23° 49' 47.814" N	90° 20' 12.753" E	545	23° 50' 27.738" N	90° 20' 26.733" E	588	23° 51' 7.828" N	90° 20' 18.612" E
503	23° 49' 48.986" N	90° 20' 12.280" E	546	23° 50' 28.910" N	90° 20' 27.082" E	589	23° 51' 8.342" N	90° 20' 19.476" E
504	23° 49' 49.602" N	90° 20' 12.095" E	547	23° 50' 30.226" N	90° 20' 27.123" E	590	23° 51' 8.095" N	90° 20' 20.010" E
505	23° 49' 51.309" N	90° 20' 11.890" E	548	23° 50' 31.460" N	90° 20' 27.041" E	591	23° 51' 8.609" N	90° 20' 20.462" E
506	23° 49' 50.301" N	90° 20' 12.013" E	549	23° 50' 32.631" N	90° 20' 26.486" E	592	23° 51' 9.431" N	90° 20' 21.182" E
507	23° 49' 51.946" N	90° 20' 11.746" E	550	23° 50' 33.639" N	90° 20' 25.479" E	593	23° 51' 19.525" N	90° 20' 28.487" E
508	23° 49' 52.871" N	90° 20' 11.499" E	551	23° 50' 34.687" N	90° 20' 24.430" E	594	23° 51' 20.183" N	90° 20' 28.789" E
509	23° 49' 54.002" N	90° 20' 11.355" E	552	23° 50' 35.448" N	90° 20' 23.608" E	595	23° 51' 21.280" N	90° 20' 29.721" E
510	23° 49' 55.482" N	90° 20' 11.437" E	553	23° 50' 36.311" N	90° 20' 22.724" E	596	23° 51' 22.267" N	90° 20' 30.242" E
511	23° 49' 56.489" N	90° 20' 11.437" E	554	23° 50' 37.278" N	90° 20' 21.778" E	597	23° 51' 22.897" N	90° 20' 30.872" E
512	23° 49' 57.435" N	90° 20' 11.396" E	555	23° 50' 38.223" N	90° 20' 20.627" E	598	23° 51' 23.802" N	90° 20' 31.530" E
513	23° 49' 58.196" N	90° 20' 12.732" E	556	23° 50' 39.210" N	90° 20' 19.599" E	599	23° 51' 24.761" N	90° 20' 32.818" E
514	23° 49' 58.504" N	90° 20' 13.288" E	557	23° 50' 39.950" N	90° 20' 18.797" E	600	23° 51' 25.501" N	90° 20' 33.915" E
515	23° 49' 59.840" N	90° 20' 14.418" E	558	23° 50' 40.875" N	90° 20' 17.728" E	601	23° 51' 26.269" N	90° 20' 34.764" E
516	23° 50' 0.951" N	90° 20' 13.822" E	559	23° 50' 41.533" N	90° 20' 16.844" E	602	23° 51' 27.228" N	90° 20' 35.998" E
517	23° 50' 2.472" N	90° 20' 14.439" E	560	23° 50' 42.253" N	90° 20' 15.755" E	603	23° 51' 28.078" N	90° 20' 37.067" E
518	23° 50' 3.664" N	90° 20' 14.706" E	561	23° 50' 42.911" N	90° 20' 14.809" E	604	23° 51' 28.873" N	90° 20' 38.081" E
519	23° 50' 4.795" N	90° 20' 14.829" E	562	23° 50' 43.651" N	90° 20' 13.555" E	605	23° 51' 29.613" N	90° 20' 38.986" E
520	23° 50' 5.247" N	90° 20' 15.364" E	563	23° 50' 44.453" N	90° 20' 12.835" E	606	23° 51' 30.572" N	90° 20' 39.835" E
521	23° 50' 5.987" N	90° 20' 15.960" E	564	23° 50' 45.295" N	90° 20' 12.157" E	607	23° 51' 31.120" N	90° 20' 40.905" E
522	23° 50' 7.858" N	90° 20' 15.981" E	565	23° 50' 45.830" N	90° 20' 11.910" E	608	23° 51' 31.833" N	90° 20' 41.864" E
523	23° 50' 9.462" N	90° 20' 15.570" E	566	23° 50' 47.577" N	90° 20' 11.581" E	609	23° 51' 32.546" N	90° 20' 42.741" E
524	23° 50' 10.901" N	90° 20' 15.097" E	567	23° 50' 48.852" N	90° 20' 11.581" E	610	23° 51' 33.259" N	90° 20' 43.235" E
525	23° 50' 11.744" N	90° 20' 14.788" E	568	23° 50' 49.818" N	90° 20' 11.951" E	611	23° 51' 34.574" N	90° 20' 43.563" E
526	23° 50' 12.792" N	90° 20' 14.501" E	569	23° 50' 50.785" N	90° 20' 12.404" E	612	23° 51' 35.424" N	90° 20' 44.331" E
527	23° 50' 13.964" N	90° 20' 14.501" E	570	23° 50' 51.792" N	90° 20' 12.424" E	613	23° 51' 36.301" N	90° 20' 44.879" E
528	23° 50' 14.951" N	90° 20' 14.501" E	571	23° 50' 52.882" N	90° 20' 12.650" E	614	23° 51' 36.356" N	90° 20' 45.839" E
529	23° 50' 16.287" N	90° 20' 14.686" E	572	23° 50' 53.930" N	90° 20' 13.000" E	615	23° 51' 37.041" N	90° 20' 46.606" E
530	23° 50' 16.966" N	90° 20' 15.097" E	573	23° 50' 54.526" N	90° 20' 13.987" E	616	23° 51' 37.809" N	90° 20' 46.825" E
531	23° 50' 18.220" N	90° 20' 15.857" E	574	23° 50' 54.506" N	90° 20' 14.768" E	617	23° 51' 38.796" N	90° 20' 47.209" E
532	23° 50' 18.898" N	90° 20' 16.289" E	575	23° 50' 55.307" N	90° 20' 15.385" E	618	23° 51' 39.453" N	90° 20' 47.648" E
533	23° 50' 20.235" N	90° 20' 17.440" E	576	23° 50' 56.089" N	90° 20' 16.166" E	619	23° 51' 39.700" N	90° 20' 48.333" E
534	23° 50' 20.461" N	90° 20' 18.242" E	577	23° 50' 56.520" N	90° 20' 17.235" E	620	23° 51' 40.057" N	90° 20' 48.909" E
535	23° 50' 21.674" N	90° 20' 19.640" E	578	23° 50' 57.610" N	90° 20' 18.180" E	621	23° 51' 41.400" N	90° 20' 49.539" E
536	23° 50' 22.660" N	90° 20' 20.709" E	579	23° 50' 58.247" N	90° 20' 18.633" E	622	23° 51' 42.524" N	90° 20' 50.005" E
537	23° 50' 21.489" N	90° 20' 19.126" E	580	23° 50' 59.316" N	90° 20' 19.003" E	623	23° 51' 43.675" N	90° 20' 50.608" E
538	23° 50' 22.249" N	90° 20' 19.928" E	581	23° 51' 0.344" N	90° 20' 19.188" E	624	23° 51' 44.881" N	90° 20' 51.485" E
539	23° 50' 23.421" N	90° 20' 21.182" E	582	23° 51' 1.002" N	90° 20' 19.085" E	625	23° 51' 46.169" N	90° 20' 52.472" E
540	23° 50' 24.182" N	90° 20' 22.313" E	583	23° 51' 2.297" N	90° 20' 18.818" E	626	23° 51' 47.293" N	90° 20' 53.185" E
541	23° 50' 24.922" N	90° 20' 23.258" E	584	23° 51' 3.449" N	90° 20' 18.756" E	627	23° 51' 48.801" N	90° 20' 54.035" E
542	23° 50' 25.518" N	90° 20' 24.245" E	585	23° 51' 4.662" N	90° 20' 18.509" E	628	23° 51' 50.418" N	90° 20' 54.994" E
543	23° 50' 26.258" N	90° 20' 25.273" E	586	23° 51' 5.628" N	90° 20' 18.180" E	629	23° 51' 51.350" N	90° 20' 55.789" E

630	23° 51' 52.200" N	90° 20' 56.173" E	655	23° 52' 40.937" N	90° 21' 9.440" E	680	23° 53' 19.121" N	90° 21' 25.503" E
631	23° 51' 52.255" N	90° 20' 57.022" E	656	23° 52' 41.732" N	90° 21' 10.646" E	681	23° 53' 20.602" N	90° 21' 25.393" E
632	23° 51' 53.296" N	90° 20' 57.708" E	657	23° 52' 43.185" N	90° 21' 12.099" E	682	23° 53' 22.356" N	90° 21' 25.722" E
633	23° 51' 54.310" N	90° 20' 58.174" E	658	23° 52' 44.117" N	90° 21' 12.866" E	683	23° 53' 23.397" N	90° 21' 26.873" E
634	23° 51' 55.242" N	90° 20' 58.640" E	659	23° 52' 45.625" N	90° 21' 14.867" E	684	23° 53' 24.549" N	90° 21' 28.189" E
635	23° 52' 29.753" N	90° 20' 59.243" E	660	23° 52' 46.831" N	90° 21' 16.402" E	685	23° 53' 26.193" N	90° 21' 29.779" E
636	23° 52' 30.192" N	90° 20' 58.804" E	661	23° 52' 48.530" N	90° 21' 17.499" E	686	23° 53' 26.687" N	90° 21' 31.040" E
637	23° 52' 30.822" N	90° 20' 58.283" E	662	23° 52' 50.010" N	90° 21' 18.376" E	687	23° 53' 28.770" N	90° 21' 32.849" E
638	23° 52' 36.195" N	90° 20' 58.448" E	663	23° 52' 51.107" N	90° 21' 19.418" E	688	23° 53' 30.853" N	90° 21' 34.439" E
639	23° 52' 36.935" N	90° 20' 59.325" E	664	23° 52' 53.026" N	90° 21' 21.391" E	689	23° 51' 7.478" N	90° 20' 18.109" E
640	23° 52' 37.922" N	90° 20' 59.544" E	665	23° 52' 54.122" N	90° 21' 22.762" E	690	23° 51' 5.919" N	90° 20' 17.834" E
641	23° 52' 38.717" N	90° 20' 59.955" E	666	23° 52' 54.670" N	90° 21' 24.461" E	691	23° 50' 57.062" N	90° 20' 17.697" E
642	23° 52' 39.155" N	90° 21' 0.284" E	667	23° 52' 57.137" N	90° 21' 28.683" E	692	23° 50' 54.269" N	90° 20' 13.363" E
643	23° 52' 40.115" N	90° 21' 1.573" E	668	23° 52' 58.782" N	90° 21' 29.615" E	693	23° 50' 53.533" N	90° 20' 12.746" E
644	23° 52' 40.499" N	90° 21' 2.094" E	669	23° 53' 0.975" N	90° 21' 30.437" E	694	23° 50' 46.971" N	90° 20' 11.650" E
645	23° 52' 41.568" N	90° 21' 0.915" E	670	23° 53' 3.223" N	90° 21' 30.382" E	695	23° 49' 24.565" N	90° 20' 17.543" E
646	23° 52' 42.390" N	90° 21' 0.887" E	671	23° 53' 4.319" N	90° 21' 30.218" E	696	23° 49' 25.439" N	90° 20' 18.314" E
647	23° 52' 41.869" N	90° 21' 3.053" E	672	23° 53' 5.251" N	90° 21' 29.724" E	697	23° 49' 26.176" N	90° 20' 18.828" E
648	23° 52' 41.869" N	90° 21' 3.190" E	673	23° 53' 6.841" N	90° 21' 29.231" E	698	23° 49' 26.844" N	90° 20' 19.531" E
649	23° 52' 41.266" N	90° 21' 4.259" E	674	23° 53' 7.992" N	90° 21' 29.012" E	699	23° 49' 27.649" N	90° 20' 20.627" E
650	23° 52' 41.266" N	90° 21' 4.643" E	675	23° 53' 10.240" N	90° 21' 28.518" E	700	23° 49' 28.335" N	90° 20' 21.124" E
651	23° 52' 40.252" N	90° 21' 5.739" E	676	23° 53' 12.323" N	90° 21' 27.970" E	701	23° 49' 29.431" N	90° 20' 22.546" E
652	23° 52' 39.731" N	90° 21' 6.178" E	677	23° 53' 14.352" N	90° 21' 27.751" E	702	23° 49' 30.065" N	90° 20' 23.163" E
653	23° 52' 39.484" N	90° 21' 7.384" E	678	23° 53' 16.106" N	90° 21' 27.202" E			
654	23° 52' 40.115" N	90° 21' 8.398" E	679	23° 53' 17.641" N	90° 21' 26.599" E			

Annexure : 6- Table of the geographic coordinates of Pillars on the embankment of Buriganga

The geographic coordinates of these faulty bank pillars on Buriganga embankment are provided in the table

Serial	Latitude	Longitude	Side
1	23° 44' 36.172" N	90° 20' 49.855" E	East
2	23° 42' 41.229" N	90° 21' 46.864" E	East
3	23° 42' 40.237" N	90° 21' 47.752" E	East
4	23° 42' 39.262" N	90° 21' 48.567" E	East
5	23° 42' 37.582" N	90° 21' 50.334" E	East
6	23° 42' 36.357" N	90° 21' 52.418" E	East
7	23° 42' 35.735" N	90° 21' 54.632" E	East
8	23° 42' 35.160" N	90° 21' 55.833" E	East
9	23° 42' 34.435" N	90° 21' 57.441" E	East
10	23° 42' 29.673" N	90° 22' 17.834" E	East
11	23° 42' 29.651" N	90° 22' 18.583" E	East
12	23° 42' 29.635" N	90° 22' 20.545" E	East
13	23° 42' 29.685" N	90° 22' 21.611" E	East
14	23° 42' 29.813" N	90° 22' 23.357" E	East
15	23° 42' 29.835" N	90° 22' 24.797" E	East
16	23° 42' 29.842" N	90° 22' 26.265" E	East
17	23° 42' 29.842" N	90° 22' 27.324" E	East
18	23° 42' 29.831" N	90° 22' 28.029" E	East
19	23° 42' 29.992" N	90° 22' 29.185" E	East
20	23° 42' 30.021" N	90° 22' 30.733" E	East
21	23° 42' 29.997" N	90° 22' 34.337" E	East
22	23° 42' 30.037" N	90° 22' 35.327" E	East
23	23° 42' 30.285" N	90° 22' 36.883" E	East
24	23° 42' 30.274" N	90° 22' 38.107" E	East
25	23° 42' 30.231" N	90° 22' 40.217" E	East
26	23° 42' 30.202" N	90° 22' 41.462" E	East
27	23° 42' 30.195" N	90° 22' 42.467" E	East
28	23° 42' 30.209" N	90° 22' 44.962" E	East
29	23° 42' 30.234" N	90° 22' 46.096" E	East
30	23° 42' 30.551" N	90° 22' 50.264" E	East
31	23° 42' 30.666" N	90° 22' 51.110" E	East
32	23° 42' 30.911" N	90° 22' 52.928" E	East
33	23° 42' 31.015" N	90° 22' 53.864" E	East
34	23° 42' 31.116" N	90° 22' 55.056" E	East
35	23° 42' 31.152" N	90° 22' 55.830" E	East
36	23° 42' 31.339" N	90° 22' 57.828" E	East
37	23° 42' 31.584" N	90° 22' 59.437" E	East
38	23° 42' 31.786" N	90° 23' 0.535" E	East
39	23° 42' 31.824" N	90° 23' 1.334" E	East
40	23° 42' 32.090" N	90° 23' 2.893" E	East
41	23° 42' 32.267" N	90° 23' 3.980" E	East
42	23° 42' 32.436" N	90° 23' 5.096" E	East
43	23° 42' 32.576" N	90° 23' 6.065" E	East
44	23° 42' 32.695" N	90° 23' 7.710" E	East
45	23° 42' 32.760" N	90° 23' 8.653" E	East
46	23° 42' 32.853" N	90° 23' 9.409" E	East
47	23° 42' 33.105" N	90° 23' 10.748" E	East
48	23° 42' 33.231" N	90° 23' 11.519" E	East
49	23° 42' 33.339" N	90° 23' 12.163" E	East
50	23° 42' 33.473" N	90° 23' 13.016" E	East
51	23° 42' 33.638" N	90° 23' 14.291" E	East
52	23° 42' 33.768" N	90° 23' 15.392" E	East

53	23° 42' 33.991" N	90° 23' 16.663" E	East
54	23° 42' 34.311" N	90° 23' 18.261" E	East
55	23° 42' 34.520" N	90° 23' 19.334" E	East
56	23° 42' 35.085" N	90° 23' 21.131" E	East
57	23° 42' 40.841" N	90° 23' 42.308" E	East
58	23° 42' 38.677" N	90° 24' 0.629" E	East
59	23° 41' 8.698" N	90° 25' 50.547" E	East
60	23° 40' 22.716" N	90° 26' 46.435" E	East
61	23° 40' 21.679" N	90° 26' 47.232" E	East
62	23° 40' 19.707" N	90° 26' 48.627" E	East
63	23° 40' 8.671" N	90° 26' 56.958" E	East
64	23° 40' 7.154" N	90° 26' 58.653" E	East
65	23° 40' 5.410" N	90° 27' 0.459" E	East
66	23° 40' 4.575" N	90° 27' 1.310" E	East
67	23° 40' 3.942" N	90° 27' 2.011" E	East
68	23° 40' 0.916" N	90° 27' 5.112" E	East
69	23° 40' 9.330" N	90° 26' 56.553" E	East
70	23° 40' 10.033" N	90° 26' 55.937" E	East
71	23° 40' 10.787" N	90° 26' 55.457" E	East
72	23° 40' 11.609" N	90° 26' 55.029" E	East
73	23° 40' 12.431" N	90° 26' 54.480" E	East
74	23° 40' 12.997" N	90° 26' 54.052" E	East
75	23° 40' 13.699" N	90° 26' 53.555" E	East
76	23° 40' 14.402" N	90° 26' 52.853" E	East
77	23° 40' 14.984" N	90° 26' 52.339" E	East
78	23° 40' 15.635" N	90° 26' 51.928" E	East
79	23° 40' 16.063" N	90° 26' 51.653" E	East
80	23° 40' 16.594" N	90° 26' 51.242" E	East
81	23° 40' 17.126" N	90° 26' 50.848" E	East
82	23° 40' 17.502" N	90° 26' 50.591" E	East
83	23° 40' 18.136" N	90° 26' 50.197" E	East
84	23° 40' 18.805" N	90° 26' 49.409" E	East
85	23° 40' 19.216" N	90° 26' 49.135" E	East
86	23° 40' 20.089" N	90° 26' 48.381" E	East
87	23° 40' 20.723" N	90° 26' 47.919" E	East
88	23° 40' 21.409" N	90° 26' 47.542" E	East
89	23° 40' 22.265" N	90° 26' 46.839" E	East
90	23° 40' 23.070" N	90° 26' 46.017" E	East
91	23° 40' 23.550" N	90° 26' 45.520" E	East
92	23° 40' 23.876" N	90° 26' 45.160" E	East
93	23° 40' 24.235" N	90° 26' 44.835" E	East
94	23° 40' 24.595" N	90° 26' 44.458" E	East
95	23° 40' 25.246" N	90° 26' 43.927" E	East
96	23° 40' 25.949" N	90° 26' 43.396" E	East
97	23° 40' 26.582" N	90° 26' 42.899" E	East
98	23° 40' 27.199" N	90° 26' 42.179" E	East
99	23° 40' 28.296" N	90° 26' 40.980" E	East
100	23° 40' 29.169" N	90° 26' 40.089" E	East
101	23° 40' 29.838" N	90° 26' 39.490" E	East
102	23° 40' 30.711" N	90° 26' 38.770" E	East
103	23° 40' 31.345" N	90° 26' 38.222" E	East
104	23° 40' 32.133" N	90° 26' 37.571" E	East
105	23° 40' 32.664" N	90° 26' 37.091" E	East
106	23° 40' 33.418" N	90° 26' 36.389" E	East
107	23° 40' 33.881" N	90° 26' 35.943" E	East
108	23° 40' 34.600" N	90° 26' 35.361" E	East
109	23° 40' 35.543" N	90° 26' 34.384" E	East
110	23° 40' 36.845" N	90° 26' 32.380" E	East
111	23° 40' 37.170" N	90° 26' 31.677" E	East
112	23° 40' 37.838" N	90° 26' 30.615" E	East
113	23° 40' 38.866" N	90° 26' 30.170" E	East

114	23° 40' 39.808" N	90° 26' 29.594" E	East
115	23° 40' 40.686" N	90° 26' 28.964" E	East
116	23° 40' 42.029" N	90° 26' 28.333" E	East
117	23° 40' 43.235" N	90° 26' 26.853" E	East
118	23° 40' 43.811" N	90° 26' 25.565" E	East
119	23° 40' 44.743" N	90° 26' 24.331" E	East
120	23° 40' 45.894" N	90° 26' 23.591" E	East
121	23° 40' 47.319" N	90° 26' 22.358" E	East
122	23° 40' 48.224" N	90° 26' 20.960" E	East
123	23° 40' 49.814" N	90° 26' 19.753" E	East
124	23° 40' 50.965" N	90° 26' 17.424" E	East
125	23° 40' 51.623" N	90° 26' 14.655" E	East
126	23° 40' 52.555" N	90° 26' 12.791" E	East
127	23° 40' 53.103" N	90° 26' 11.119" E	East
128	23° 40' 53.980" N	90° 26' 10.297" E	East
129	23° 40' 55.466" N	90° 26' 8.679" E	East
130	23° 40' 56.666" N	90° 26' 7.172" E	East
131	23° 40' 58.064" N	90° 26' 6.294" E	East
132	23° 40' 58.722" N	90° 26' 5.308" E	East
133	23° 40' 59.709" N	90° 26' 3.992" E	East
134	23° 41' 1.683" N	90° 26' 2.457" E	East
135	23° 41' 2.752" N	90° 26' 1.415" E	East
136	23° 41' 3.876" N	90° 26' 0.566" E	East
137	23° 41' 5.411" N	90° 25' 59.853" E	East
138	23° 41' 6.370" N	90° 25' 59.113" E	East
139	23° 41' 7.165" N	90° 25' 57.770" E	East
140	23° 41' 7.823" N	90° 25' 55.577" E	East
141	23° 41' 7.987" N	90° 25' 53.439" E	East
142	23° 41' 7.878" N	90° 25' 51.986" E	East
143	23° 41' 9.742" N	90° 25' 50.067" E	East
144	23° 41' 10.482" N	90° 25' 49.464" E	East
145	23° 41' 11.606" N	90° 25' 47.956" E	East
146	23° 41' 12.346" N	90° 25' 46.668" E	East
147	23° 41' 12.647" N	90° 25' 45.352" E	East
148	23° 41' 13.223" N	90° 25' 44.448" E	East
149	23° 41' 14.347" N	90° 25' 43.680" E	East
150	23° 41' 15.608" N	90° 25' 42.584" E	East
151	23° 41' 16.540" N	90° 25' 41.898" E	East
152	23° 41' 17.554" N	90° 25' 40.583" E	East
153	23° 41' 18.349" N	90° 25' 38.993" E	East
154	23° 41' 19.226" N	90° 25' 37.924" E	East
155	23° 41' 20.323" N	90° 25' 37.101" E	East
156	23° 41' 21.392" N	90° 25' 36.087" E	East
157	23° 41' 22.269" N	90° 25' 35.128" E	East
158	23° 41' 23.146" N	90° 25' 34.360" E	East
159	23° 41' 23.859" N	90° 25' 33.620" E	East
160	23° 41' 24.928" N	90° 25' 32.962" E	East
161	23° 41' 25.777" N	90° 25' 32.469" E	East
162	23° 41' 27.121" N	90° 25' 31.921" E	East
163	23° 41' 28.491" N	90° 25' 31.071" E	East
164	23° 41' 30.026" N	90° 25' 29.837" E	East
165	23° 41' 31.808" N	90° 25' 28.713" E	East
166	23° 41' 33.069" N	90° 25' 27.343" E	East
167	23° 41' 32.438" N	90° 25' 28.028" E	East
168	23° 41' 33.699" N	90° 25' 26.630" E	East
169	23° 41' 34.494" N	90° 25' 25.452" E	East
170	23° 41' 35.262" N	90° 25' 24.821" E	East
171	23° 41' 35.974" N	90° 25' 24.136" E	East
172	23° 41' 37.208" N	90° 25' 23.094" E	East
173	23° 41' 37.948" N	90° 25' 22.080" E	East
174	23° 41' 38.825" N	90° 25' 21.230" E	East

175	23° 41' 39.538" N	90° 25' 20.517" E	East
176	23° 41' 40.251" N	90° 25' 19.777" E	East
177	23° 41' 40.881" N	90° 25' 19.010" E	East
178	23° 41' 41.676" N	90° 25' 18.160" E	East
179	23° 41' 42.416" N	90° 25' 17.584" E	East
180	23° 41' 43.238" N	90° 25' 16.543" E	East
181	23° 41' 43.787" N	90° 25' 15.858" E	East
182	23° 41' 44.335" N	90° 25' 15.419" E	East
183	23° 41' 45.075" N	90° 25' 14.460" E	East
184	23° 41' 46.226" N	90° 25' 13.500" E	East
185	23° 41' 47.268" N	90° 25' 12.787" E	East
186	23° 41' 48.008" N	90° 25' 12.047" E	East
187	23° 41' 48.830" N	90° 25' 11.335" E	East
188	23° 41' 50.009" N	90° 25' 10.457" E	East
189	23° 41' 50.886" N	90° 25' 10.046" E	East
190	23° 41' 52.010" N	90° 25' 9.416" E	East
191	23° 41' 52.997" N	90° 25' 8.758" E	East
192	23° 41' 53.682" N	90° 25' 7.716" E	East
193	23° 41' 54.340" N	90° 25' 6.675" E	East
194	23° 41' 55.025" N	90° 25' 5.798" E	East
195	23° 41' 55.903" N	90° 25' 4.948" E	East
196	23° 41' 56.697" N	90° 25' 4.263" E	East
197	23° 41' 57.712" N	90° 25' 3.358" E	East
198	23° 41' 59.027" N	90° 25' 2.124" E	East
199	23° 41' 59.987" N	90° 25' 1.192" E	East
200	23° 42' 0.891" N	90° 25' 0.425" E	East
201	23° 42' 1.823" N	90° 24' 59.438" E	East
202	23° 42' 3.112" N	90° 24' 58.068" E	East
203	23° 42' 4.099" N	90° 24' 56.916" E	East
204	23° 42' 5.168" N	90° 24' 55.929" E	East
205	23° 42' 6.182" N	90° 24' 54.860" E	East
206	23° 42' 7.059" N	90° 24' 53.928" E	East
207	23° 42' 7.854" N	90° 24' 52.942" E	East
208	23° 42' 8.731" N	90° 24' 52.092" E	East
209	23° 42' 9.444" N	90° 24' 51.516" E	East
210	23° 42' 10.211" N	90° 24' 50.255" E	East
211	23° 42' 11.116" N	90° 24' 49.296" E	East
212	23° 42' 12.541" N	90° 24' 47.514" E	East
213	23° 42' 24.191" N	90° 24' 28.299" E	East
214	23° 42' 25.150" N	90° 24' 26.407" E	East
215	23° 42' 26.576" N	90° 24' 23.913" E	East
216	23° 42' 27.782" N	90° 24' 21.884" E	East
217	23° 42' 29.098" N	90° 24' 19.582" E	East
218	23° 42' 30.194" N	90° 24' 17.608" E	East
219	23° 42' 30.962" N	90° 24' 15.744" E	East
220	23° 42' 35.402" N	90° 24' 7.137" E	East
221	23° 42' 36.170" N	90° 24' 5.821" E	East
222	23° 42' 36.691" N	90° 24' 5.054" E	East
223	23° 42' 36.883" N	90° 24' 4.423" E	East
224	23° 42' 37.486" N	90° 24' 3.382" E	East
225	23° 42' 37.897" N	90° 24' 2.368" E	East
226	23° 42' 38.308" N	90° 24' 1.463" E	East
227	23° 42' 38.993" N	90° 23' 59.517" E	East
228	23° 42' 39.569" N	90° 23' 58.228" E	East
229	23° 42' 40.172" N	90° 23' 56.995" E	East
230	23° 42' 40.748" N	90° 23' 55.707" E	East
231	23° 42' 41.131" N	90° 23' 54.692" E	East
232	23° 42' 41.214" N	90° 23' 53.952" E	East
233	23° 42' 41.214" N	90° 23' 52.828" E	East
234	23° 42' 41.131" N	90° 23' 51.430" E	East
235	23° 42' 41.159" N	90° 23' 50.197" E	East

236	23° 42' 41.022" N	90° 23' 49.320" E	East
237	23° 42' 40.994" N	90° 23' 48.004" E	East
238	23° 42' 41.104" N	90° 23' 46.633" E	East
239	23° 42' 41.131" N	90° 23' 45.948" E	East
240	23° 42' 41.076" N	90° 23' 44.879" E	East
241	23° 42' 40.994" N	90° 23' 43.591" E	East
242	23° 42' 40.967" N	90° 23' 41.480" E	East
243	23° 42' 41.076" N	90° 23' 40.301" E	East
244	23° 42' 40.939" N	90° 23' 38.903" E	East
245	23° 42' 41.022" N	90° 23' 37.971" E	East
246	23° 42' 41.022" N	90° 23' 37.177" E	East
247	23° 42' 41.022" N	90° 23' 36.573" E	East
248	23° 42' 40.857" N	90° 23' 35.970" E	East
249	23° 42' 40.419" N	90° 23' 35.121" E	East
250	23° 42' 40.282" N	90° 23' 34.381" E	East
251	23° 42' 40.282" N	90° 23' 33.558" E	East
252	23° 42' 40.446" N	90° 23' 32.325" E	East
253	23° 42' 40.665" N	90° 23' 31.091" E	East
254	23° 42' 40.802" N	90° 23' 30.022" E	East
255	23° 42' 32.579" N	90° 23' 6.942" E	East
256	23° 42' 30.468" N	90° 22' 49.207" E	East
257	23° 42' 30.276" N	90° 22' 47.672" E	East
258	23° 42' 30.249" N	90° 22' 46.849" E	East
259	23° 42' 30.386" N	90° 22' 43.834" E	East
260	23° 42' 30.413" N	90° 22' 39.174" E	East
261	23° 42' 30.194" N	90° 22' 33.582" E	East
262	23° 42' 30.194" N	90° 22' 32.349" E	East
263	23° 42' 30.139" N	90° 22' 31.471" E	East
264	23° 42' 29.838" N	90° 22' 22.398" E	East
265	23° 42' 29.673" N	90° 22' 19.520" E	East
266	23° 42' 29.701" N	90° 22' 16.751" E	East
267	23° 42' 29.673" N	90° 22' 15.354" E	East
268	23° 42' 29.728" N	90° 22' 13.818" E	East
269	23° 42' 29.783" N	90° 22' 12.393" E	East
270	23° 42' 29.975" N	90° 22' 10.639" E	East
271	23° 42' 30.167" N	90° 22' 8.884" E	East
272	23° 42' 30.660" N	90° 22' 7.678" E	East
273	23° 42' 31.071" N	90° 22' 5.897" E	East
274	23° 42' 31.263" N	90° 22' 4.690" E	East
275	23° 42' 31.620" N	90° 22' 3.512" E	East
276	23° 42' 32.031" N	90° 22' 2.059" E	East
277	23° 42' 32.552" N	90° 21' 59.839" E	East
278	23° 42' 33.127" N	90° 21' 58.550" E	East
279	23° 42' 33.840" N	90° 21' 57.783" E	East
280	23° 42' 32.031" N	90° 22' 1.154" E	East
281	23° 42' 30.633" N	90° 22' 6.801" E	East
282	23° 42' 29.920" N	90° 22' 9.926" E	East
283	23° 42' 34.882" N	90° 21' 56.933" E	East
284	23° 42' 36.115" N	90° 21' 53.945" E	East
285	23° 42' 36.718" N	90° 21' 51.889" E	East
286	23° 42' 37.349" N	90° 21' 50.957" E	East
287	23° 42' 38.226" N	90° 21' 49.806" E	East
288	23° 42' 38.637" N	90° 21' 48.764" E	East
289	23° 42' 40.775" N	90° 21' 47.257" E	East
290	23° 42' 41.817" N	90° 21' 46.599" E	East
291	23° 42' 43.050" N	90° 21' 45.996" E	East
292	23° 44' 34.943" N	90° 20' 51.036" E	East
293	23° 44' 33.957" N	90° 20' 52.105" E	East
294	23° 44' 33.025" N	90° 20' 53.010" E	East
295	23° 44' 32.175" N	90° 20' 54.024" E	East
296	23° 44' 31.490" N	90° 20' 54.928" E	East

297	23° 44' 29.845" N	90° 20' 56.518" E	East
298	23° 44' 28.995" N	90° 20' 57.560" E	East
299	23° 44' 27.953" N	90° 20' 58.656" E	East
300	23° 44' 27.734" N	90° 21' 3.618" E	East
301	23° 42' 22.072" N	90° 24' 31.076" E	East
302	23° 39' 57.504" N	90° 27' 8.144" E	East
303	23° 39' 52.241" N	90° 27' 12.749" E	East
304	23° 40' 28.747" N	90° 26' 21.768" E	West
305	23° 40' 29.053" N	90° 26' 21.379" E	West
306	23° 40' 29.338" N	90° 26' 21.066" E	West
307	23° 40' 29.928" N	90° 26' 20.170" E	West
308	23° 40' 30.490" N	90° 26' 19.338" E	West
309	23° 40' 30.644" N	90° 26' 19.133" E	West
310	23° 40' 31.076" N	90° 26' 18.413" E	West
311	23° 42' 26.184" N	90° 24' 7.886" E	West
312	23° 42' 29.144" N	90° 24' 4.433" E	West
313	23° 42' 34.191" N	90° 23' 54.924" E	West
314	23° 40' 48.907" N	90° 25' 54.710" E	West
315	23° 40' 44.871" N	90° 25' 59.889" E	West
316	23° 40' 19.904" N	90° 26' 37.590" E	West
317	23° 40' 1.207" N	90° 26' 54.368" E	West
318	23° 41' 6.195" N	90° 25' 36.944" E	West
319	23° 42' 25.559" N	90° 24' 8.768" E	West
320	23° 42' 26.381" N	90° 24' 7.507" E	West
321	23° 42' 26.765" N	90° 24' 6.931" E	West
322	23° 42' 27.149" N	90° 24' 6.383" E	West
323	23° 42' 27.587" N	90° 24' 5.835" E	West
324	23° 42' 28.190" N	90° 24' 5.067" E	West
325	23° 42' 25.230" N	90° 24' 9.289" E	West
326	23° 42' 24.901" N	90° 24' 9.782" E	West
327	23° 42' 24.654" N	90° 24' 10.138" E	West
328	23° 42' 24.243" N	90° 24' 10.687" E	West
329	23° 42' 23.777" N	90° 24' 11.290" E	West
330	23° 42' 23.476" N	90° 24' 11.701" E	West
331	23° 42' 23.147" N	90° 24' 12.222" E	West
332	23° 42' 22.270" N	90° 24' 13.373" E	West
333	23° 42' 21.804" N	90° 24' 14.003" E	West
334	23° 42' 21.338" N	90° 24' 15.018" E	West
335	23° 42' 20.735" N	90° 24' 15.840" E	West
336	23° 42' 20.104" N	90° 24' 16.827" E	West
337	23° 42' 20.433" N	90° 24' 16.388" E	West
338	23° 42' 19.364" N	90° 24' 17.978" E	West
339	23° 42' 18.679" N	90° 24' 18.663" E	West
340	23° 42' 18.213" N	90° 24' 19.349" E	West
341	23° 42' 17.555" N	90° 24' 20.884" E	West
342	23° 42' 16.952" N	90° 24' 22.364" E	West
343	23° 42' 16.129" N	90° 24' 23.652" E	West
344	23° 42' 15.855" N	90° 24' 24.337" E	West
345	23° 42' 15.362" N	90° 24' 25.050" E	West
346	23° 42' 15.225" N	90° 24' 25.269" E	West
347	23° 42' 14.896" N	90° 24' 25.818" E	West
348	23° 42' 14.704" N	90° 24' 26.092" E	West
349	23° 42' 14.348" N	90° 24' 26.695" E	West
350	23° 42' 29.369" N	90° 24' 3.094" E	West
351	23° 42' 29.698" N	90° 24' 2.545" E	West
352	23° 42' 30.219" N	90° 24' 1.778" E	West
353	23° 42' 30.603" N	90° 24' 1.038" E	West
354	23° 42' 31.151" N	90° 24' 0.325" E	West
355	23° 42' 31.425" N	90° 23' 59.695" E	West
356	23° 42' 31.699" N	90° 23' 59.009" E	West
357	23° 42' 32.055" N	90° 23' 58.187" E	West

Annexure : 7- Table of the geographic coordinates of Pillars on the embankment of Turagh

The geographic coordinates of these faulty bank pillars on Turagh embankment are provided in the table

Serial	Latitude	Longitude	Position
1	23° 48' 4.578" N	90° 20' 36.787" E	On the Embankment
2	23° 48' 2.680" N	90° 20' 36.733" E	On the Embankment
3	23° 48' 1.150" N	90° 20' 36.650" E	On the Embankment
4	23° 47' 59.923" N	90° 20' 36.399" E	Below the Embankment
5	23° 47' 55.569" N	90° 20' 31.942" E	Beside River Bank
6	23° 47' 54.054" N	90° 20' 30.275" E	Beside River Bank
7	23° 47' 53.514" N	90° 20' 29.334" E	Beside River Bank
8	23° 47' 52.829" N	90° 20' 27.426" E	Below the Embankment
9	23° 47' 52.689" N	90° 20' 26.559" E	Below the Embankment
10	23° 47' 52.126" N	90° 20' 25.877" E	On the Embankment
11	23° 47' 52.342" N	90° 20' 24.103" E	Beside River Bank
12	23° 47' 51.695" N	90° 20' 22.912" E	Beside River Bank
13	23° 47' 51.068" N	90° 20' 22.794" E	Beside River Bank
14	23° 47' 50.566" N	90° 20' 22.739" E	Beside River Bank
15	23° 47' 49.611" N	90° 20' 22.814" E	Beside River Bank
16	23° 47' 48.795" N	90° 20' 23.616" E	Below the Embankment
17	23° 47' 48.417" N	90° 20' 24.041" E	Below the Embankment
18	23° 47' 47.990" N	90° 20' 24.695" E	On the Embankment
19	23° 47' 47.466" N	90° 20' 25.264" E	On the Embankment
20	23° 47' 46.023" N	90° 20' 25.855" E	On the Embankment
21	23° 47' 44.864" N	90° 20' 24.913" E	Below the Embankment
22	23° 47' 43.473" N	90° 20' 24.814" E	Below the Embankment
23	23° 47' 42.587" N	90° 20' 24.534" E	Beside River Bank

24	23° 47' 41.766" N	90° 20' 24.760" E	Below the Embankment
25	23° 47' 40.963" N	90° 20' 24.748" E	Below the Embankment
26	23° 47' 39.754" N	90° 20' 24.407" E	Beside River Bank
27	23° 47' 36.823" N	90° 20' 23.804" E	Beside River Bank
28	23° 47' 35.587" N	90° 20' 24.418" E	Beside River Bank
29	23° 47' 33.702" N	90° 20' 24.065" E	Beside River Bank
30	23° 47' 32.995" N	90° 20' 24.547" E	Below the Embankment
31	23° 47' 31.919" N	90° 20' 24.671" E	Below the Embankment
32	23° 47' 31.038" N	90° 20' 24.611" E	On the Embankment
33	23° 47' 29.704" N	90° 20' 24.337" E	On the Embankment
34	23° 47' 28.868" N	90° 20' 24.207" E	Below the Embankment
35	23° 47' 28.400" N	90° 20' 24.085" E	Beside River Bank
36	23° 47' 27.637" N	90° 20' 24.409" E	Below the Embankment
37	23° 47' 26.174" N	90° 20' 24.592" E	On the Embankment
38	23° 47' 25.483" N	90° 20' 23.982" E	On the Embankment
39	23° 47' 24.784" N	90° 20' 23.230" E	Beside River Bank
40	23° 47' 24.208" N	90° 20' 23.067" E	Beside River Bank
41	23° 47' 23.172" N	90° 20' 22.700" E	Beside River Bank
42	23° 47' 22.248" N	90° 20' 22.010" E	Beside River Bank
43	23° 47' 19.968" N	90° 20' 20.545" E	Below the Embankment
44	23° 47' 19.243" N	90° 20' 20.168" E	Beside River Bank
45	23° 47' 18.961" N	90° 20' 20.412" E	Below the Embankment
46	23° 47' 18.682" N	90° 20' 20.898" E	On the Embankment
47	23° 47' 18.199" N	90° 20' 20.799" E	On the Embankment

48	23° 47' 14.160" N	90° 20' 19.162" E	Beside River Bank
49	23° 47' 13.223" N	90° 20' 18.983" E	Beside River Bank
50	23° 47' 12.574" N	90° 20' 18.927" E	Beside River Bank
51	23° 47' 11.837" N	90° 20' 18.728" E	Beside River Bank
52	23° 47' 10.819" N	90° 20' 18.639" E	Below the Embankment
53	23° 47' 10.128" N	90° 20' 18.270" E	On the Embankment
54	23° 47' 9.827" N	90° 20' 17.589" E	On the Embankment
55	23° 47' 9.308" N	90° 20' 16.884" E	On the Embankment
56	23° 47' 8.983" N	90° 20' 16.339" E	On the Embankment
57	23° 47' 8.511" N	90° 20' 15.820" E	On the Embankment
58	23° 47' 8.078" N	90° 20' 15.041" E	On the Embankment
59	23° 47' 7.623" N	90° 20' 14.546" E	On the Embankment
60	23° 47' 7.053" N	90° 20' 13.965" E	On the Embankment
61	23° 47' 6.583" N	90° 20' 13.614" E	On the Embankment
62	23° 47' 6.129" N	90° 20' 13.312" E	On the Embankment
63	23° 47' 5.702" N	90° 20' 13.043" E	On the Embankment
64	23° 47' 5.348" N	90° 20' 12.811" E	On the Embankment
65	23° 47' 4.978" N	90° 20' 12.526" E	On the Embankment
66	23° 47' 4.699" N	90° 20' 12.203" E	On the Embankment
67	23° 47' 4.516" N	90° 20' 19.626" E	Below the Embankment
68	23° 47' 15.235" N	90° 20' 19.901" E	Below the Embankment
69	23° 47' 16.332" N	90° 20' 20.757" E	On the Embankment
70	23° 47' 16.777" N	90° 20' 20.826" E	On the Embankment
71	23° 47' 20.512" N	90° 20' 20.963" E	Below the Embankment
72	23° 47' 21.094" N	90° 20' 21.168" E	Below the Embankment
73	23° 47' 21.643" N	90° 20' 21.785" E	Below the Embankment
74	23° 47' 22.739" N	90° 20' 22.368" E	Beside River Bank
75	23° 47' 23.767" N	90° 20' 22.984" E	Beside River Bank

76	23° 47' 25.240" N	90° 20' 23.567" E	Below the Embankment
77	23° 47' 25.823" N	90° 20' 24.252" E	On the Embankment
78	23° 47' 26.748" N	90° 20' 24.698" E	On the Embankment
79	23° 47' 27.262" N	90° 20' 24.663" E	Below the Embankment
80	23° 47' 34.492" N	90° 20' 24.218" E	Below the Embankment
81	23° 47' 35.211" N	90° 20' 24.252" E	Beside River Bank
82	23° 47' 37.644" N	90° 20' 23.841" E	Beside River Bank
83	23° 47' 38.329" N	90° 20' 23.875" E	Beside River Bank
84	23° 47' 39.117" N	90° 20' 24.081" E	Beside River Bank
85	23° 47' 40.248" N	90° 20' 24.698" E	Beside River Bank
86	23° 47' 44.291" N	90° 20' 24.835" E	Below the Embankment
87	23° 47' 46.655" N	90° 20' 25.691" E	On the Embankment
88	23° 47' 45.251" N	90° 20' 24.663" E	Below the Embankment
89	23° 47' 45.525" N	90° 20' 24.321" E	Below the Embankment
90	23° 47' 30.209" N	90° 20' 24.492" E	On the Embankment
91	23° 47' 54.536" N	90° 20' 31.208" E	Beside River Bank
92	23° 47' 55.187" N	90° 20' 31.619" E	Beside River Bank
93	23° 47' 56.112" N	90° 20' 32.578" E	Beside River Bank
94	23° 47' 56.695" N	90° 20' 33.161" E	Beside River Bank
95	23° 48' 5.021" N	90° 20' 37.478" E	On the Embankment
96	23° 48' 5.946" N	90° 20' 37.478" E	On the Embankment
97	23° 48' 6.631" N	90° 20' 37.273" E	On the Embankment
98	23° 47' 56.558" N	90° 20' 34.154" E	Below the Embankment
99	23° 47' 56.661" N	90° 20' 35.251" E	Below the Embankment
100	23° 47' 57.654" N	90° 20' 36.039" E	Beside River Bank
101	23° 47' 58.442" N	90° 20' 35.080" E	Beside River Bank
102	23° 47' 59.504" N	90° 20' 35.217" E	Below the Embankment

References:

Davenport, I. J., Mason, D. C., Flathert, R. A., & Gurney, C. (n.d.). 2 . APPLICATION - DEVELOPING A DEM OF THE WASH 2 . 1 A DEM OF THE WESTERN WASH 2 . 2 TOWARDS A DEM OF THE WASH. 2958, 164–171.

FFWC. (1988). BANGLADESH WATER DEVELOPMENT BOARD Water Level at Sunamgonj during monsoon.

Flood Forecasting and Warning Centre. (2014). Annual Flood Report 2014. 1–90.

BANGLADESH WATER DEVELOPMENT BOARD Water level : (2020). 2020.

The Hon'ble High Court Writ Petition 3503/2009 dated 24-28 June, 2009.

